

# ARIA<sup>®</sup>

BY THOR MOTOR COACH



 **THOR**<sup>®</sup>  
MOTOR COACH

Made to fit.

When we say  
*Made to Fit*  
we mean it.

With so many unique models available, Thor Motor Coach motorhomes are priced to fit anyone's budget – from families buying their first motorhome to full-timers looking for a roaming “dream home”.

The **Aria**® is the newest member of our luxury line of Class A diesel motorhomes. The **Aria** is a masterwork with amazing standard features, such as the 100-watt solar charging system and compelling full-body paint packages.

Welcome to the **Aria**, the motorhome that is ***Made to Fit*** your dreams.



See what the new **Aria** has to offer.





3901 | RIVER MARBLE | PACIFIC CHERRY | LIVING ROOM



# Relax & Unwind

Thanks to a bed that was inspired by your own, **Aria** bedrooms boast a Denver Mattress® and elegant design. The **Aria 3901** takes luxury to the extreme with the Tilt-A-View® inclining bed mechanism.

You can also find plenty of areas to relax, unwind and get a good night's rest for the next day's adventures.



3901 | RIVER MARBLE | PACIFIC CHERRY | TILT-A-VIEW® BED RETRACTED



3401 | HAZEL HARBOR | RESORT CHERRY | TILT-A-VIEW® BED RETRACTED





3601 | CRYSTAL SHORES | PACIFIC CHERRY | DENVER MATTRESS® KING SIZE BED



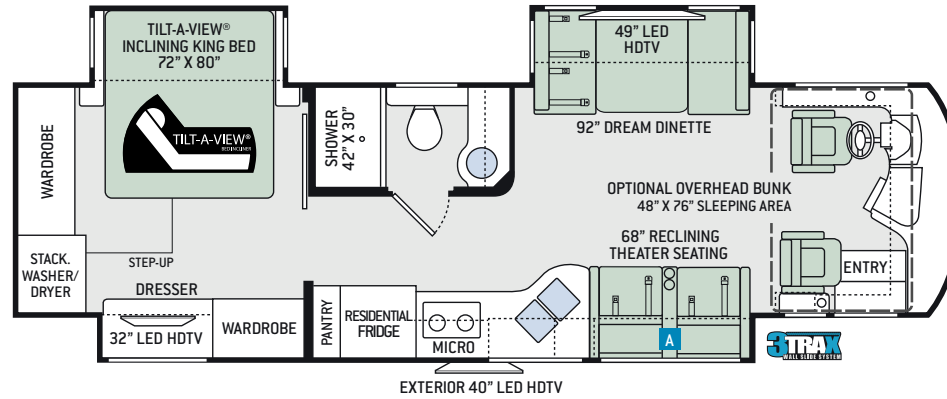
# Floor Plans

Watch our in-wall 3TRAX™ system in action.



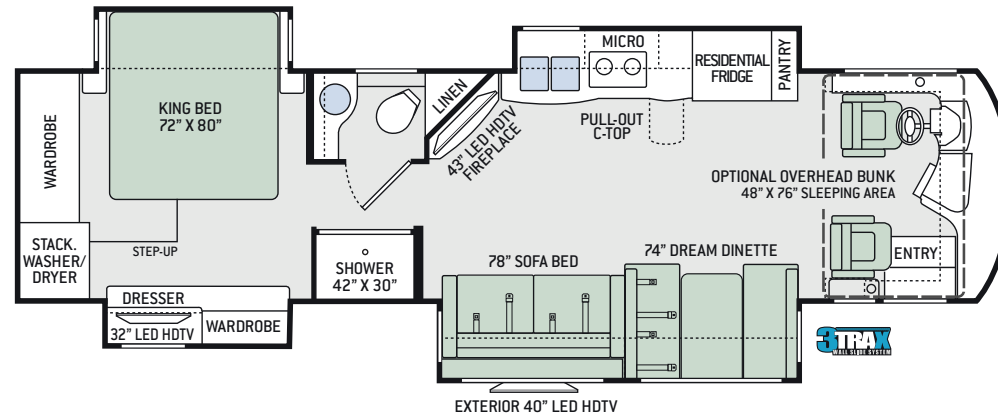
## 3401

|                                     |                   |
|-------------------------------------|-------------------|
| Chassis                             | Freightliner XC-R |
| Gross Vehicle (GVWR)                | 32,400            |
| Gross Combined (GCWR)               | 42,400            |
| Wheel Base                          | 208"              |
| Exterior Length (w/o ladder)        | 34'-8"            |
| Exterior Height (w/ AC)             | 12'-6"            |
| Exterior Width (w/o mirrors)        | 101"              |
| Interior Height (living area)       | 84"               |
| Awning Size                         | 18'               |
| Fuel (gal)                          | 100               |
| LPG (lbs)                           | 104               |
| Fresh/Waste/Gray Water (gal)        | 91 / 51 / 51      |
| Water Heater (gal)                  | 10                |
| Furnace (BTUs)                      | 35,000            |
| Exterior Storage Capacity (cu. ft.) | 125               |

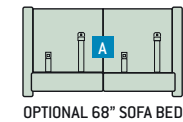


## 3601

|                                     |                   |
|-------------------------------------|-------------------|
| Chassis                             | Freightliner XC-R |
| Gross Vehicle (GVWR)                | 32,400            |
| Gross Combined (GCWR)               | 42,400            |
| Wheel Base                          | 228"              |
| Exterior Length (w/o ladder)        | 36'-3"            |
| Exterior Height (w/ AC)             | 12'-6"            |
| Exterior Width (w/o mirrors)        | 101"              |
| Interior Height (living area)       | 84"               |
| Awning Size                         | 18'               |
| Fuel (gal)                          | 100               |
| LPG (lbs)                           | 104               |
| Fresh/Waste/Gray Water (gal)        | 91 / 51 / 51      |
| Water Heater (gal)                  | 10                |
| Furnace (BTUs)                      | 35,000            |
| Exterior Storage Capacity (cu. ft.) | 160               |

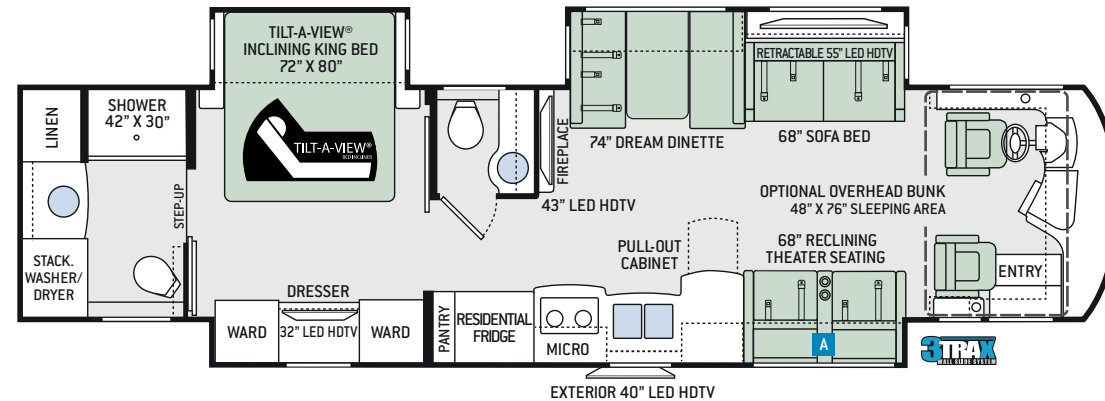


### OPTION



## 3901

|                                     |                   |
|-------------------------------------|-------------------|
| Chassis                             | Freightliner XC-R |
| Gross Vehicle (GVWR)                | 35,320            |
| Gross Combined (GCWR)               | 45,320            |
| Wheel Base                          | 272"              |
| Exterior Length (w/o ladder)        | 39'-11"           |
| Exterior Height (w/ AC)             | 12'-6"            |
| Exterior Width (w/o mirrors)        | 101"              |
| Interior Height (living area)       | 84"               |
| Awning Size                         | 18'               |
| Fuel (gal)                          | 100               |
| LPG (lbs)                           | 104               |
| Fresh/Waste/Gray Water (gal)        | 91 / 51 / 51      |
| Water Heater (gal)                  | 10                |
| Furnace (BTUs)                      | 35,000            |
| Exterior Storage Capacity (cu. ft.) | 210               |



# Interior Decor



CRYSTAL SHORES



HAZEL HARBOR



RIVER MARBLE



HIGH-GLOSS GLAZED MILAN CHERRY



HIGH-GLOSS GLAZED PACIFIC CHERRY



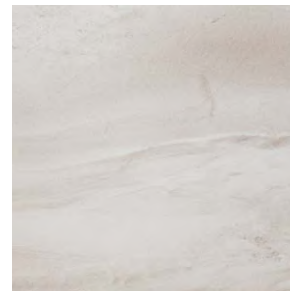
HIGH-GLOSS GLAZED RESORT CHERRY



KITCHEN & BATH COUNTERTOPS

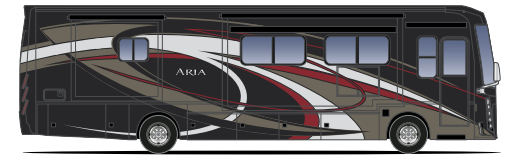


BEDROOM COUNTERTOP

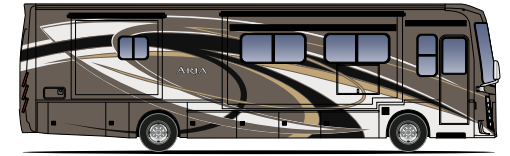


POLISHED PORCELAIN TILE FLOORING

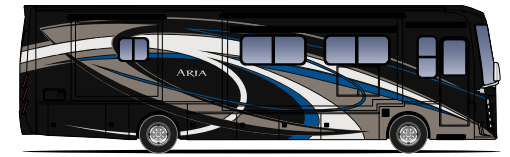
# Exterior Graphics



HERITAGE FULL-BODY PAINT



ODYSSEY FULL-BODY PAINT



SAPPHIRE FULL-BODY PAINT



STERLING FULL-BODY PAINT



# Meals *Your Way*, While You're Away

Whether you're preparing a home cooked meal or storing leftovers from that great local restaurant, the well-equipped kitchen will keep you happy and healthy. The **Aria** features an electric induction cooktop, convection microwave, and plenty of working space on the solid surface countertops.







**Have Questions?**  
Contact our Coach Link Team.







3401 | HAZEL HARBOR | RESORT CHERRY | LIVING ROOM





3401 | HAZEL HARBOR | RESORT CHERRY | KITCHEN





# ATLAS<sup>TM</sup>

## FOUNDATION

### Laying the Groundwork for Safe Travels

The Atlas Foundation<sup>TM</sup> is the premier building platform and substructure in the industry. Thor Motor Coach has partnered with industry leaders, Freightliner<sup>®</sup> Custom Chassis and MORryde<sup>®</sup> International, to bring you this innovative building design.

Innovation doesn't just happen, it takes a dedicated team of the very best designers and engineers working together to tackle the challenges in the road ahead. From the very start our main focus is you, and you will see that from the moment you step into the motorhome.

The Atlas Foundation<sup>TM</sup> is a fully integrated basement foundation design. This means that trusses, cross members and ladder assemblies are pre-formed and laser-cut from high-strength, 50 grade HSLA steel, which provides greater resistance to corrosion than carbon steel.

The structure is assembled and welded on a flat, laser-leveled table, then hoisted onto the OEM chassis and welded into place. This system includes a built-in, unit floor leveling system, which

maintains the true squareness of the motorhome body and helps prevent crowning.

Fiberglass lined, pass-through storage bays span the width of the unit with steel support under each of the compartments. The steel sub-frame can support more than 1,000 pounds per compartment. Designed to facilitate greater luminosity, the interior mold and mildew resistant fiberglass lining is white, making it easier to see within the compartment in low-light situations.

Built strong and insulated to help reduce heat transfer, the firewall and rear engine cage are fully encased in steel, which eliminates engine and road noise.

You're the one who will rely on our innovation for years to come. You're the one who will feel the strength of the Atlas Foundation<sup>TM</sup> as you drive the open road. You're the one who will benefit from our hard work and commitment to excellence.

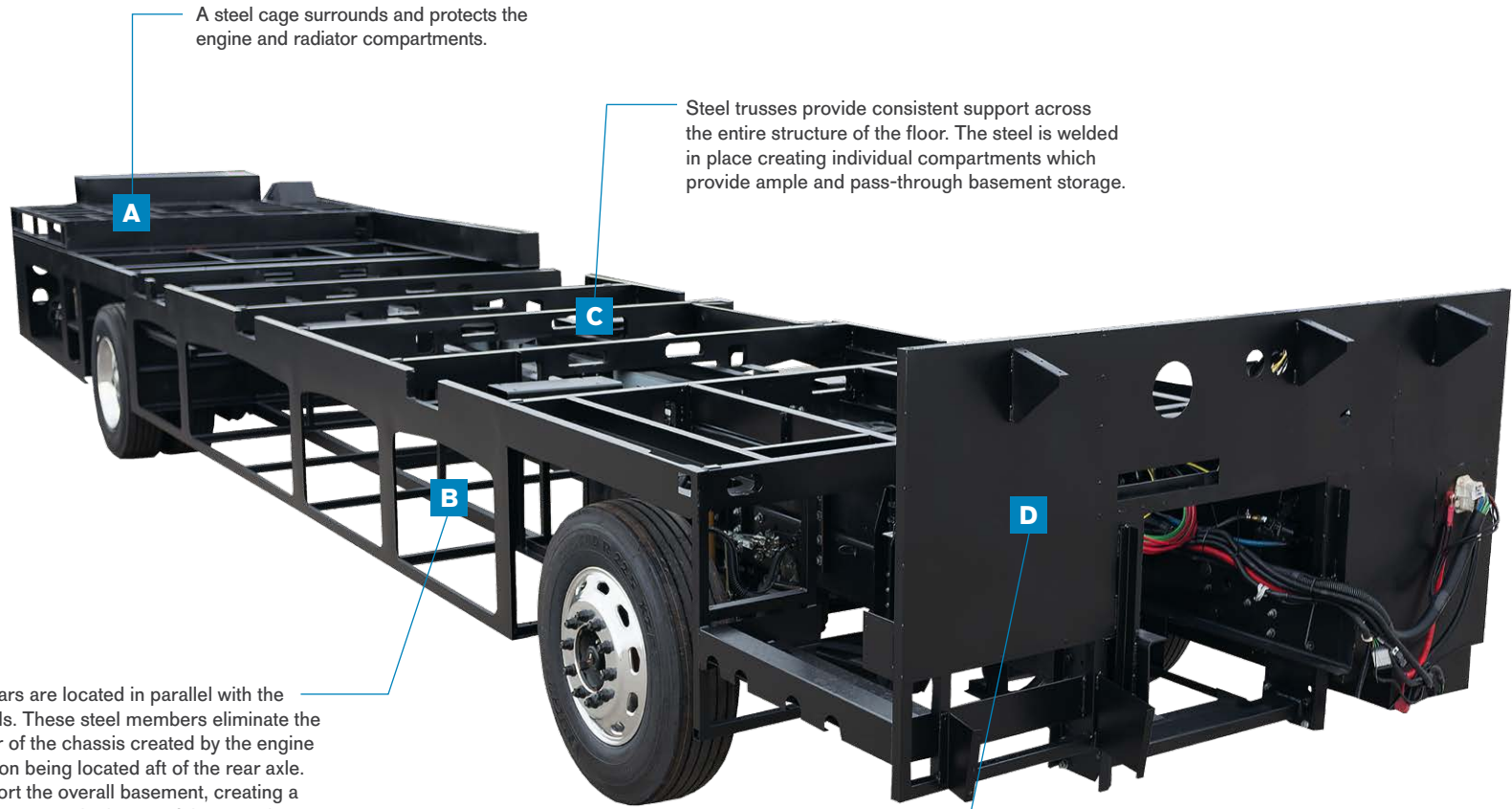
We didn't just design the Atlas Foundation<sup>TM</sup>, we crafted it to fit you.





Check out the in-depth video of the Atlas Foundation™.

*A home needs a strong foundation and that is especially true for the home that rolls down the road. The Atlas™ Foundation under the Aria provides an excellent base to construct your new motorhome.*



A steel cage surrounds and protects the engine and radiator compartments.

Steel trusses provide consistent support across the entire structure of the floor. The steel is welded in place creating individual compartments which provide ample and pass-through basement storage.

Anti-camber bars are located in parallel with the main frame rails. These steel members eliminate the natural camber of the chassis created by the engine and transmission being located aft of the rear axle. The bars support the overall basement, creating a true structure to mount the house of the motorhome.

The steel firewall protects the front of the coach while providing a strong anchor point for the cockpit. Solid foam insulation is added to provide a buffer to eliminate road noise and help prevent heat and cold transfer.





# Features

## CONSTRUCTION & EXTERIOR

- Freightliner® XC-R Raised Rail Chassis
- Cummins® ISB-XT 6.7L Engine with 360HP & 800 lb.-ft. Torque
- 6-Speed Allison MH-3000 Automatic Transmission
- Air-Ride™ Suspension
- I-Beam Front Axle with 55° Wheel Cut
- Exhaust Brake
- Sachs® Shock Absorbers
- Dual Fuel Fills
- One-Piece Fiberglass Front & Rear Caps
- Invisible Front Paint Protection
- One-Piece Windshield
- Full-Body Paint Package
- Automatic Leveling Jacks with Touchpad Controls
- Side-Hinged Locking Compartment Doors
- Basement Pass-Through Storage
- Easy Slide Storage Tray
- Power Entry Door & Patio Awnings with Integrated LED Lighting
- Slideout Room Topper Awnings
- Patio Light (Both Sides)
- Roof Ladder
- Frameless Dual Pane Windows
- 10,000-lb. Trailer Hitch with 7-pin Round Connector

## AUTOMOTIVE & COCKPIT

- 6.5" Touchscreen AM/FM Dash Radio with CD/DVD Player, Bluetooth® & Mirror Display
- Back-Up Monitor
- Chrome Heated/Power Mirrors with Integrated Side View Cameras

- Leatherette Reclining/Swivel Power Adjustable Captain's Chairs (Passenger Seat has Electric Footrest)
- Driver & Passenger Overhead Storage Cabinetry
- Tilt/Telescoping Steering Column
- Cruise Control
- Emergency Engine Start Switch
- Air Horns
- Fog Lights
- Power Solar & Privacy Shades on Windshield
- Manual Solar & Privacy Shades on Side Windows
- Electric Step Cover
- 275/80R 22.5" Radial Tires with Aluminum Wheels

## INTERIOR

- Polished Porcelain Tile Throughout
- Ceiling Ducted Whisper Air™ Central Cooling System
- LED Lighting
- High-Gloss Glazed Cabinetry with Solid Wood Raised Panel Cabinet Doors & Nickel Finish Hardware
- Solid Wood Veneer
- Window Solar & Privacy Roller Shades
- Leatherette Sofa Bed (3601 & 3901)
- Leatherette Reclining Theater Seating with Footrests (3401 & 3901)
- Leatherette Dream Dinette® Booth
- Electric Fireplace with Remote Control (3601 & 3901)

## INTERIOR OPTION

- Leatherette Sofa Bed (3401 & 3901)

## KITCHEN

- Stainless Steel Residential Refrigerator with Ice Maker
- Electric Induction Cooktop
- 1.9 cu. ft. Stainless Steel Over-the-Range Convection Microwave Oven
- Solid Surface Countertops
- Large Double Bowl Stainless Steel Sink with Single Handle Faucet & Pull-Down Sprayer
- Designer Tile Backsplash
- 12-volt Attic Fan with Cover

## BEDROOM & BATHROOM

- Denver Mattress® King Size Bed (3601)
- Denver Mattress® King Size Bed with Tilt-A-View™ Inclining Bed Mechanism (3401 & 3901)
- Bedspread with Throw Pillows
- USB Charging Ports in Nightstands
- Foot Flush Porcelain Toilet
- Oversized Full Height Shower with Glass Door
- Designer Tile Backsplash
- 12-volt Attic Fan with Cover

## BEDROOM & BATHROOM OPTION

- Power Drop-Down Hide-Away Overhead Bunk with Cotton Cloud™ Mattress

## ENTERTAINMENT

- 49" LED HDTV in Living Area (3401)
- 43" LED HDTV in Living Area (3601)
- 43" LED HDTV & 55" LED HDTV in Living Area (3901)
- Yamaha® Sound Bar with Bluetooth®
- Sony® Blu-Ray Player in Living Area & Bedroom
- 32" LED HDTV in Bedroom

- Exterior 40" LED HDTV & Sound Bar w/Bluetooth®
- Cable TV & HDMI Video Ready
- Satellite Ready

## ENTERTAINMENT OPTION

- 32" LED HDTV in Cockpit Overhead (3401 & 3601)

## ELECTRICAL & PLUMBING

- Cummins Onan® RV QD 8000 Diesel Generator
- Automatic Generator Start
- 50-amp Shoreline Power Cord
- 2000-watt Inverter/100-amp Converter
- Dual 15,000 BTU Mid-Profile Ducted Air Conditioners with Heat Pumps
- Energy Management System
- Multiplex Wiring Control System
- 100-watt Solar Charging System with Power Controller
- Four (4) Auxiliary House Batteries
- Battery Disconnect Switch
- Exterior GFCI Recept
- 10-gallon DSI Gas/Electric Water Heater
- Water Heater Bypass System
- Enclosed & Heated Holding Tanks
- E-Z Flow Water Panel with Whole-House Water Filtration
- Black Tank Flush System
- Outside Shower
- Stackable Washer & Dryer

**IMPORTANT—PLEASE READ:** This brochure reflects product design, fabrication, material, components and specifications at the date of printing, which date is disclosed below. Please visit us online at [ThorMotorCoach.com](http://ThorMotorCoach.com) or consult with your selling dealership for the latest in standards, options, specification and technical information. Photographs in the brochure may depict optional equipment or may only be available in certain floor plans. Components, appliances and the chassis may have been manufactured in a calendar year before the vehicle's designated model year. All capacities are approximate. The actual length of the vehicle may differ from that indicated in the brochure due to variances in the manufacturing processes and/or installed components. All dry weights are based on standard model features and do not include optional features or equipment. Component part and appliance manufacturers issue limited warranties covering portions of the vehicle not covered under the limited warranty we issue. Copyright Thor Motor Coach, Inc. © OH 04/07/17

YOUR LOCAL THOR MOTOR COACH DEALER

**LA MESA RV**  
EXPERIENCE LIFE  
[www.lamesarv.com](http://www.lamesarv.com)  
800-496-8778



Made to fit.

[thormotorcoach.com/aria](http://thormotorcoach.com/aria)



P.O. Box 1486, Elkhart, IN 46515 Sales Department: 800.860.5658 Customer Service: 877.855.2867