

2017

ALLEGRO BUS®



**TIFFIN**  
MOTORHOMES

2017

ALLEGRO BUS

# MADE FOR THOSE WHO FOLLOW THE SUN.

The luxurious Allegro Bus is the preferred home sweet motorhome for Tiffin owners who live full-time on the road. Built on Tiffin's acclaimed PowerGlide® chassis, the Bus delivers elbowroom to spare, with 7' ceilings, four slide-outs, and floor plans up to 45'. As for storage, Tiffin's Store-It-All® guarantee says it all. Handcrafted hardwood cabinetry throughout the coach supply an abundance of drawers and shelves, complemented by up to 175 cubic feet of basement space. No matter which direction you're headed, your Allegro Bus is ready to go the distance.

SHOWN 45 OPP FLOOR PLAN WITH CINDERWOOD EXTERIOR PAINT SCHEME



SHOWN 45 OPP FLOOR PLAN WITH GLAZED HONEY NATURAL CHERRY CABINETS & SEA SALT INTERIOR



SHOWN 45 OPP FLOOR PLAN WITH GLAZED HONEY



NATURAL CHERRY CABINETS & SEA SALT INTERIOR

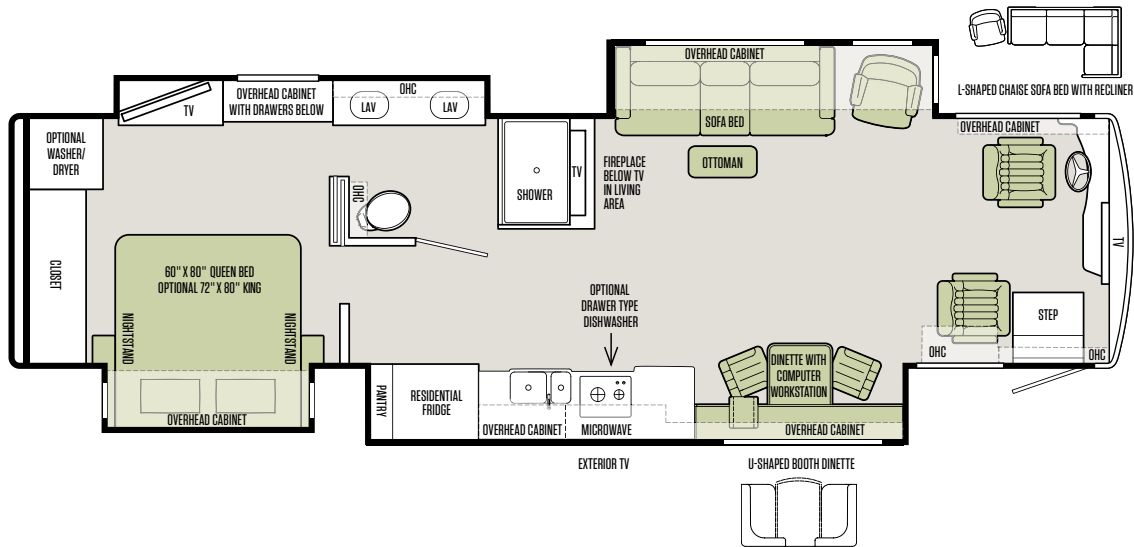


SHOWN 45 OPP FLOOR PLAN WITH GLAZED HONEY NATURAL CHERRY CABINETS & SEA SALT INTERIOR

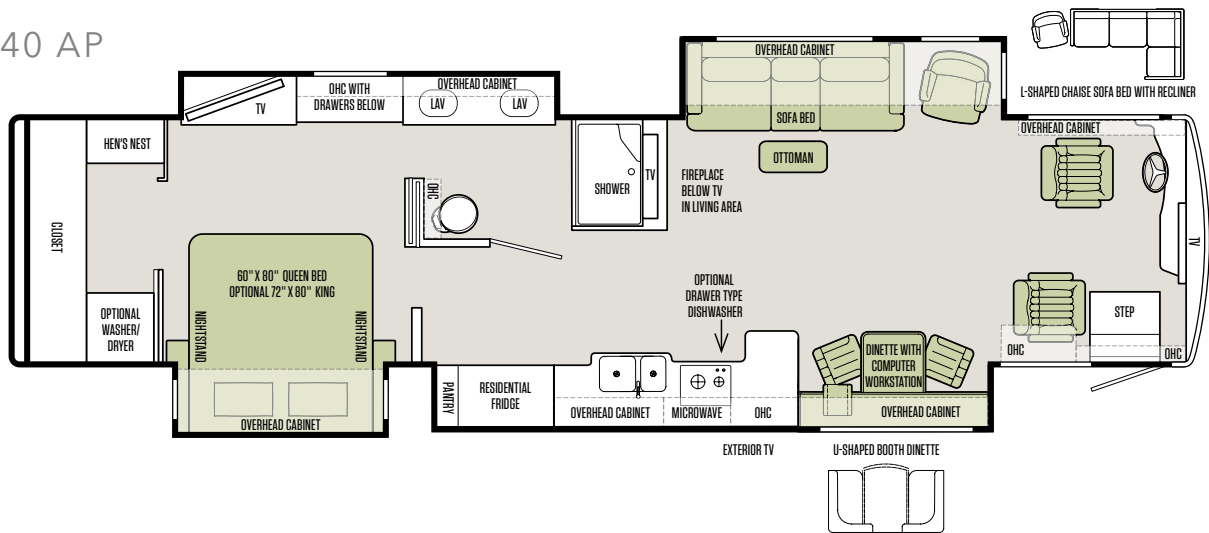
## FLOOR PLANS

Thoughtful in every detail  
and in every dimension.

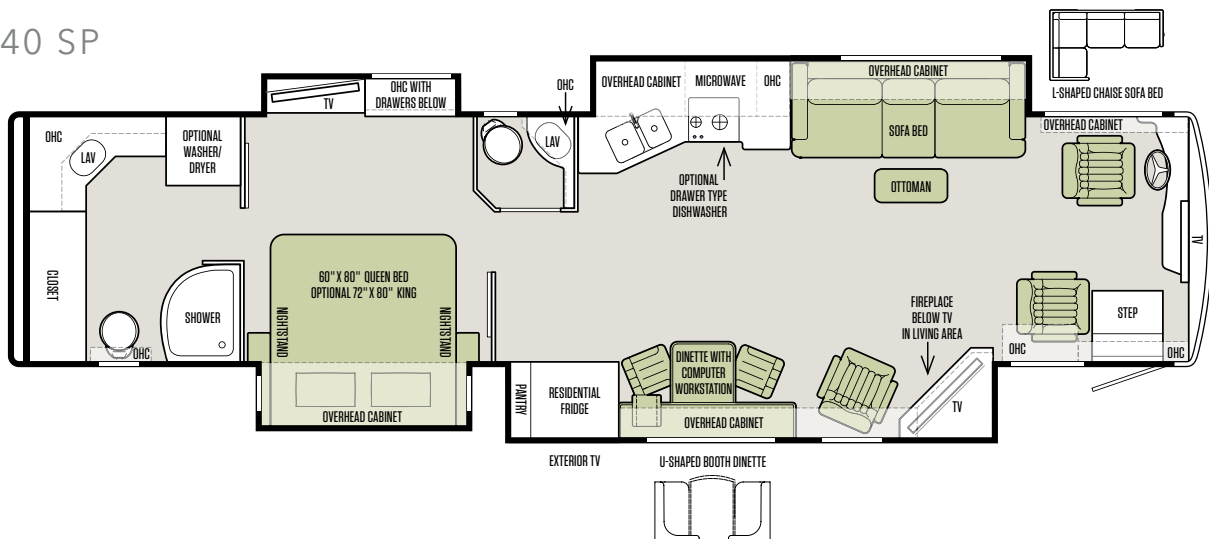
37 AP



40 AP



40 SP

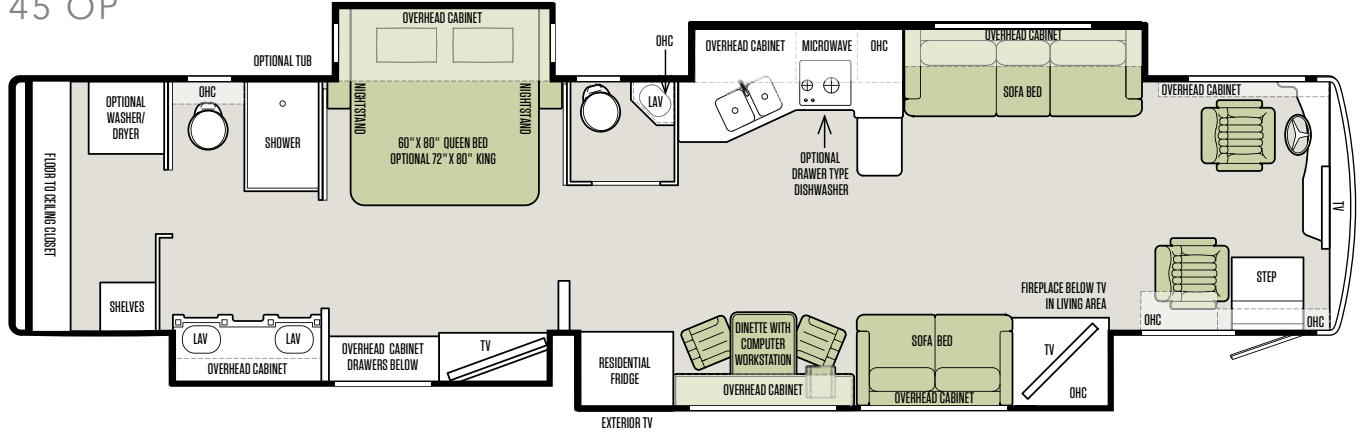


## FLOOR PLANS



The design of every Tiffin floor plan must meet four essential criteria:  
**Maximum space.** **Optimal organization.** **Relaxation plus.** **Elegant atmosphere.**  
**MORE** plans offer your family the most comfortable layout for life on the road.

45 OP

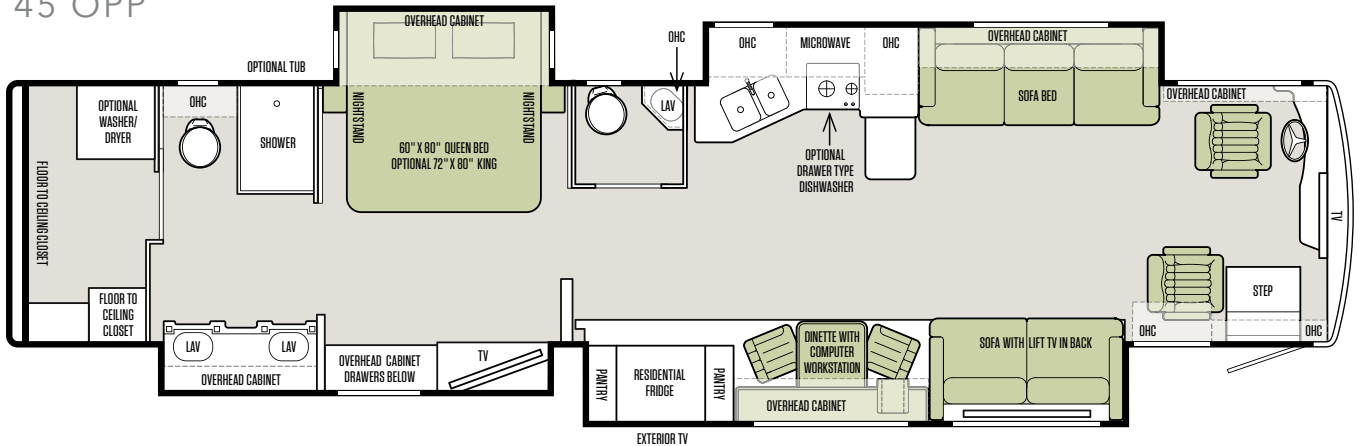


### LIVING AREA/DINETTE PACKAGE OPTIONS FOR 45 OP

**Packages:**

- Package A (Standard): Ultra Leather DE Sofa with TV Cabinet (PS), Ultra Leather Air Coil Hide-A-Bed Sofa (DS)
- Package B: Ultra Leather DE Sofa with TV Cabinet (PS), Ultra Leather L-Shaped Sofa (DS)
- Package C: Entertainment Center with Recliner & Fireplace (PS), Ultra Leather Air Coil Hide-A-Bed Sofa (DS)
- Package D: Entertainment Center with Recliner & Fireplace (PS), Ultra Leather L-Shaped Sofa (DS)
- Package E: Ultra Leather DE Sofa with Lift TV (PS), Ultra Leather Air Coil Hide-A-Bed Sofa (DS)
- Package G: Ultra Leather DE Sofa with Lift TV (PS), Theatre Seating (DS)
- Package H: Ultra Leather DE Sofa with Lift TV (PS), 2 Recliners with Fireplace (DS)

45 OPP



### LIVING AREA/DINETTE PACKAGE OPTIONS FOR 45 OPP

**Packages:**

- Package A (Standard): Ultra Leather DE Sofa Bed with Lift TV (PS), Ultra Leather Air Coil Hide-A-Bed Sofa (DS)
- Package C: Ultra Leather Air Coil Hide-A-Bed Sofa with Lift TV (PS), Theatre Seating (DS)
- Package D: Ultra Leather Air Coil Hide-A-Bed Sofa with Lift TV (PS), 2 Recliners with Fireplace (DS)

Note: If optional furniture combinations are selected, window locations may vary from diagram shown.

All options may not be available in every model. Because of progressive improvements, specifications, standard & optional equipment are subject to change without notice or obligation. For a complete & up-to-date list of available options & specifications, as well as information on Tiffin's full line of motorhomes, visit [tiffinmotorhomes.com](http://tiffinmotorhomes.com).

## INTERIOR DÉCOR

Now it's time to personalize your coach.

1

Start with our handcrafted hardwood cabinetry available in your choice of luxury finishes: Cherry Wood, Glazed Canyon Cherry, Glazed Honey Natural Cherry, Natural Cherry, or White Chocolate.

### CARAVAN

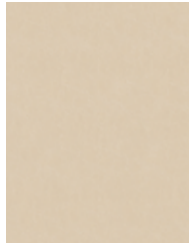
#### LIVING AREA



PILLOWS



VALANCE



SOFA LEATHER

#### KITCHEN



BACKSPLASH



COUNTERTOP

#### BEDROOM



2

Then, add texture with your choice of four designer fabric suites: Caravan, Estate, Sea Salt, and Woodcrest. All fabrics are treated for stain resistance.

### ESTATE Fabrics by Ralph Lauren®

#### LIVING AREA



PILLOWS



VALANCE



SOFA LEATHER

#### KITCHEN



BACKSPLASH



COUNTERTOP

#### BEDROOM



### CABINETS



CHERRY WOOD



GLAZED CANYON CHERRY



GLAZED CHERRY



GLAZED HONEY NATURAL CHERRY



NATURAL CHERRY

## INTERIOR DÉCOR

Make your experience on the road all your own. Express yourself by choosing the interior appointments such as cabinet finishes, flooring and fabric textures for every part of your motorhome. In the 2017 Allegro Bus, you'll be able to go in style no matter where you go.

### SEA SALT

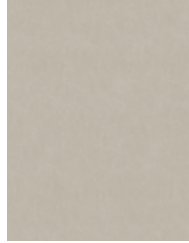
#### LIVING AREA



PILLOWS



VALANCE



SOFA LEATHER

#### KITCHEN



BACKSPLASH



COUNTERTOP

#### BEDROOM



### WOODCREST

#### LIVING AREA



PILLOWS



VALANCE



SOFA LEATHER

#### KITCHEN



BACKSPLASH



COUNTERTOP

#### BEDROOM



#### CABINETS *continued*



WHITE CHOCOLATE  
(BATH)\*

\*Available only with glazed finishes

#### STANDARD FLOORING



CARPET



TILE

## FULL-BODY PAINT SCHEMES

### PREMIUM PAINT SYSTEM

Our eight-step full-body paint system features premium grade paints sealed with four layers of superclear coat with ultraviolet protection. An additional layer of scratch-resistant plastic coating protects the front of the coach, stairwell, and entry door lock.



CINDERWOOD



RUSTIC CANYON



CRIMSON



SUNLIT SAND



LAPIS SKY



WHITE MAHOGANY



MAROON CORAL



[tiffinmotorhomes.com](https://www.tiffinmotorhomes.com)

To learn more about our premium paint system or for a complete & up-to-date list of available options & specifications, as well as information on Tiffin's full line of motorhomes, visit [tiffinmotorhomes.com](https://www.tiffinmotorhomes.com).



**AUTOMOTIVE**

- Standard on All Models:**
- Allison 3000 MH 6-speed Automatic Transmission with Lock-up (Torque Converter)
  - Aluminum Wheels
  - Fog Lights
  - Side-mounted Radiator
  - Air Bags: 4 on 37' & 40'; 6 on 45'
  - Emergency Start Switch
  - ABS Brakes & Two-stage Compression Engine Brake
  - Cruise Control
  - Adjustable Fuel & Brake Pedals
  - VIP Smart Wheel
  - Independent Front Suspension

**CHASSIS OPTIONS**

| PowerGlide® Chassis:                        | 37 AP       | 40 AP       | 40 SP       | 45 OP       | 45 OPP      |
|---|-------------|-------------|-------------|-------------|-------------|
| Cummins ISL 450 HP/1250 lb Torque           | S           | S           | S           | S           | S           |
| GVWR  | 40,000 lb   | 40,000 lb   | 40,000 lb   | 51,000 lb   | 51,000 lb   |
| GAWR - Front                                | 16,000 lb   | 16,000 lb   | 16,000 lb   | 17,000 lb   | 17,000 lb   |
| GAWR - Rear                                 | 24,000 lb   | 24,000 lb   | 24,000 lb   | 23,000 lb   | 23,000 lb   |
| GAWR - Tag Axle                             | NA          | NA          | NA          | 13,300 lb   | 13,300 lb   |
| GCWR  | 55,000 lb   | 55,000 lb   | 55,000 lb   | 66,000 lb   | 66,000 lb   |
| Alternator Amps                             | 210         | 210         | 210         | 210         | 210         |
| DEF Tank* (Gallons)                         | 15          | 15          | 15          | 15          | 15          |
| Basement Storage (Cubic Feet – Approximate) | 119         | 177         | 177         | 175         | 175         |
| Overall Height with Roof Air (Maximum)      | 12' 7"      | 12' 7"      | 12' 7"      | 12' 7"      | 12' 7"      |
| Wheel Base                                  | 250"        | 276"        | 276"        | 326"        | 326"        |
| Tire Size                                   | 315/80R22.5 | 315/80R22.5 | 315/80R22.5 | 315/80R22.5 | 315/80R22.5 |

| Freightliner® Chassis:                           | 37 AP        | 40 AP        | 40 SP        | 45 OP       | 45 OPP       |
|--|--------------|--------------|--------------|-------------|--------------|
| Freightliner Cummins ISX15 600 HP/1950 lb Torque |              |              |              | O           | O            |
| GVWR   |              |              |              | 50,000 lb   | 50,000 lb    |
| GAWR - Front                                     |              |              |              | 17,000 lb   | 17,000 lb    |
| GAWR - Rear                                      | Freightliner | Freightliner | Freightliner | 20,000 lb   | 20,000 lb    |
| GAWR - Tag Axle                                  | Chassis      | Chassis      | Chassis      | 13,000 lb   | 13,000 lb    |
| GCWR   | Not          | Not          | Not          | 65,000 lb   | 65,000 lb    |
| Alternator Amps                                  | Available    | Available    | Available    | 270         | 270          |
| DEF Tank* (Gallons)                              | on           | on           | on           | 13          | 13           |
| Basement Storage (Cubic Feet – Approximate)      | This         | This         | This         | 165         | 165          |
| Overall Height with Roof Air (Maximum)           | Model        | Model        | Model        | 12'11"      | 12'11"       |
| Wheel Base                                       |              |              |              | 316"        | 316"         |
| Tire Size  |              |              |              | 315/80R22.5 | 315/80R 22.5 |
| Minimum Garage Height                            |              |              |              | 13'5"       | 13'5"        |

\*Diesel Exhaust Fluid (DEF) is the active component used in Selective Catalytic Reduction (SCR) engines to reduce nitrogen oxide emissions by 90% to meet EPA standards.

**WEIGHTS & MEASURES**

| Overall:                             | 37 AP     | 40 AP     | 40 SP     | 45 OP     | 45 OPP    |
|--------------------------------------|-----------|-----------|-----------|-----------|-----------|
| Overall Length (Approximate**)       | 38' 9"    | 40' 11"   | 40' 11"   | 45'       | 45'       |
| Interior Height                      | 84"       | 84"       | 84"       | 84"       | 84"       |
| Overall Width                        | 101"      | 101"      | 101"      | 101"      | 101"      |
| Interior Width                       | 96"       | 96"       | 96"       | 96"       | 96"       |
| Fresh Water (Gallons)                | 90        | 90        | 90        | 90        | 90        |
| Black Water (Gallons)                | 50        | 50        | 50        | 50        | 50        |
| Grey Water (Gallons)                 | 70        | 70        | 70        | 70        | 70        |
| Minimum Garage Height                | 13'       | 13'       | 13'       | 13'       | 13'       |
| Trailer Hitch Capacity               | 15,000 lb | 15,000 lb | 15,000 lb | 15,000 lb | 15,000 lb |
| Fuel Tank (Gallons) - Dual Fuel Fill | 150       | 150       | 150       | 150       | 150       |

\*\*The approximated coach lengths do not include side-view mirrors & rear ladders.

**COCKPIT**

- Standard on All Models:**
- Front Overhead TV
  - In-dash Navigation System
  - Lighted Switches
  - 12 V Disconnect Switch
  - Color Rear Vision Monitor System with Side-view Cameras Activated by Turn Signals
  - Dual Dash Fans
  - Driver Side Power Window
  - Contemporary Wraparound Dash
  - Fire Extinguisher
  - Integrated Seatbelts
  - Power Solar & Privacy Windshield & Cockpit Shades
  - Beverage Tray
  - Power Ultra Leather Driver & Passenger Seats with Passenger Power Footrest
  - CD Player & AM/FM Stereo
  - USB Dash Receptacles
  - Satellite Radio (Subscription Required)
  - Computer Drawer on Passenger Side
  - USB Passenger Side Receptacles
  - Passenger Seat Console Box with Built-in Magazine Rack
  - Cupholders on Driver & Passenger Side
  - Power Step Well Cover
  - Drawer in Step Well

| Available Options:               | 37 AP | 40 AP | 40 SP | 45 OP | 45 OPP |
|----------------------------------|-------|-------|-------|-------|--------|
| Mobilye® Camera/Sensor System*** | O     | O     | O     | O     | O      |

\*\*\*NOT available on the 45 OP & 45 OPP Freightliner Chassis

**GENERAL EXTERIOR**

**Standard on All Models:**

- Fiberglass Front & Rear Caps
- Dual Fuel Fills
- Full-body Paint with Protective Film on Front Cap
- Large Tinted One-piece Windshield
- Heated Chrome Power Mirrors with Remote Adjustments
- Single Motor Intermittent Wipers
- Undercoating
- Deadbolt Front Entrance Door
- Keyless Entry Door System & Keyless Component Door Locks
- Exterior TV
- Dual Pane Tinted Windows
- Automatic Door & Patio Awning
- Paramount Awning
- Pass-thru Basement Storage
- Lockable Swing-out Exterior Storage Doors with Gas Shocks
- Heated Water & Holding Tank Compartments
- Auto Generator Start
- SeeLevel Monitor Pad Located at Dump Station
- SeeLevel Tank Monitor
- Six House Batteries
- Custom Mud Flap
- 50 Amp Service
- Power Cord Reel-50 Amp
- Black Holding Tank Flush System
- 110 V Exterior Receptacle
- Water Filter
- Gravity Water Fill
- Docking Lights
- Exterior Rinse Hose with Soap Dispenser & Paper Towel Holder
- Onan® 10.0 kw Generator with Three Low Profile Roof ACs with Heat Pumps
- Concealed Air Horn
- Digital TV Antenna
- Combination Valid Air Leveling System with HWH Hydraulic Leveling Jacks
- Luggage Compartment Lights
- Pure Sine Wave Inverter
- Pre-wired for Winegard Trav'ler Satellite
- Low Profile In-motion Satellite Dish\*

**Available Options:**

|   | 37 AP | 40 AP | 40 SP | 45 OP | 45 OPP |
|---|-------|-------|-------|-------|--------|
| One Storage Compartment Slide-out Tray        | ○     | ○     | ○     | ○     | ○      |
| One Power Storage Compartment Slide-out Tray  | ○     | ○     | ○     | ○     | ○      |
| Two Storage Compartment Slide-out Trays       | NA    | ○     | ○     | ○     | ○      |
| Two Power Storage Compartment Slide-out Trays | NA    | ○     | ○     | ○     | ○      |
| Second Paramount Awning                       | NA    | NA    | NA    | ○     | ○      |
| 145 Watt Solar Panel                          | ○     | ○     | ○     | ○     | ○      |
| Basement Freezer/Refrigerator                 | ○     | ○     | ○     | ○     | ○      |
| Roof Ladder                                   | ○     | ○     | ○     | ○     | ○      |

\*High-definition programming is not available on a domed satellite antenna unless you subscribe to DISH Network®

**GENERAL INTERIOR**

**Standard on All Models:**

- 7' Ceilings
- Soft Touch Vinyl Ceiling
- High Gloss Raised Panel Hardwood Cabinet Doors
- Washer/Dryer Ready
- SeeLevel Tank Monitor
- Carbon Monoxide & Smoke Detectors
- Central Vacuum Cleaner with VacPan
- Power Solar & Privacy Shades in Living Room
- Porcelain Tile Flooring Throughout Coach (Excluding Slide-outs)
- Complete Cable Wiring Interfacing with Surround Sound & Satellite Receiver
- In-motion Low Profile Satellite Dish with DIRECTV® Receiver (Subscription Required)
- Surround Sound Speakers in Ceiling
- Energy Management System
- Multiplex Lighting System
- Extraordinaire™ AC System
- Hydronic Heating System

**Available Options:**

|   | 37 AP | 40 AP | 40 SP | 45 OP | 45 OPP |
|---|-------|-------|-------|-------|--------|
| Cherry Wood Solid Cabinet Doors & Drawer Fronts                       | ○     | ○     | ○     | ○     | ○      |
| Glazed Canyon Cherry Solid Cabinet Doors & Drawer Fronts              | ○     | ○     | ○     | ○     | ○      |
| Glazed Cherry Solid Cabinet Doors & Drawer Fronts                     | ○     | ○     | ○     | ○     | ○      |
| Glazed Honey Natural Cherry Solid Cabinet Doors & Drawer Fronts       | ○     | ○     | ○     | ○     | ○      |
| Natural Cherry Solid Cabinet Doors & Drawer Fronts                    | ○     | ○     | ○     | ○     | ○      |
| White Chocolate Solid Cabinet Doors & Drawer Fronts in Bath Area Only | ○     | ○     | ○     | ○     | ○      |
| Stacked Washer/Dryer  | ○     | ○     | ○     | ○     | ○      |
| Dual Zone Heated Tile Floor   | ○     | ○     | ○     | ○     | ○      |

**LIVING AREA / DINETTE**

**Standard on All Models:**

- Full Porcelain Tile Flooring in Living Room & Bath (Excluding Slide-outs)
- Dinette with Computer Workstation
- Ultra Leather Air Coil Hide-A-Bed on Driver Side

**Available Options\*\*:**

|  | 37 AP | 40 AP | 40 SP |
|--|-------|-------|-------|
| Ultra Leather U-shaped Booth Dinette (Non-sleeper) on Passenger Side   | ○     | ○     | ○     |
| Ultra Leather L-Shaped Sofa on Driver Side                             | ○     | ○     | ○     |
| Ultra Leather Recliner on Passenger Side                               | NA    | NA    | S     |
| Ultra Leather Recliner on Driver Side                                  | S     | S     | NA    |
| Entertainment Center with One Ultra Leather Recliner on Passenger Side | NA    | NA    | S     |

\*\*NOTE: For a complete listing of package options for the Living Area/Dinette of the 45 OP and 45 OPP please see the floor plan page for these models.

**KITCHEN**

|                                |   |  |  |                       |                       |                       |
|--------------------------------|---|--|--|-----------------------|-----------------------|-----------------------|
| <b>Standard on All Models:</b> | <ul style="list-style-type: none"> <li>Polished Solid Surface Countertops with Sink Covers</li> <li>Expand-an-island</li> <li>Solid Surface Double Bowl Sink</li> <li>2 1/2" Deep Lighted Toe Kick</li> <li>Single Lever Sink Faucet with Built-in Sprayer</li> </ul> | <ul style="list-style-type: none"> <li>2-burner Induction Cooktop with Hinged Solid Surface Cooktop Cover</li> <li>Stainless Steel Convection Microwave with Exterior Venting</li> <li>Stainless Steel Residential Refrigerator</li> </ul> | <ul style="list-style-type: none"> <li>LED Light Above Countertop</li> <li>Solid Surface Cooktop Cover</li> <li>Galley Soap Dispenser</li> </ul> |                       |                       |                       |
| <b>Available Options:</b>      |   | <b>37 AP</b>   | <b>40 AP</b>   | <b>40 SP</b>          | <b>45 OP</b>          | <b>45 OPP</b>         |
| Dishwasher (Drawer Type)       |   | <input type="radio"/>  | <input type="radio"/>  | <input type="radio"/> | <input type="radio"/> | <input type="radio"/> |

**BEDROOM**

|   |   |  |  |                       |                       |                       |
|---|---|--|--|-----------------------|-----------------------|-----------------------|
| <b>Standard on All Models:</b>                        | <ul style="list-style-type: none"> <li>Memory Foam Queen Mattress (60" x 80")</li> <li>Bed Comforter with Throw Pillows</li> <li>Ceiling Fan</li> </ul> | <ul style="list-style-type: none"> <li>Blu-ray System &amp; Satellite Receiver</li> <li>Solid Surface Nightstand Tops</li> <li>Solar &amp; Privacy Shades</li> </ul> | <ul style="list-style-type: none"> <li>Laundry Hamper</li> <li>Wall Safe</li> <li>USB Receptacles</li> </ul> |                       |                       |                       |
| <b>Available Options:</b>                             |   | <b>37 AP</b>   | <b>40 AP</b>   | <b>40 SP</b>          | <b>45 OP</b>          | <b>45 OPP</b>         |
| King Bed Mattress (72" x 80")                         |   | <input type="radio"/>  | <input type="radio"/>  | <input type="radio"/> | <input type="radio"/> | <input type="radio"/> |
| Dual Control Air Comfort Mattress - Queen (60" x 80") |   | <input type="radio"/>  | <input type="radio"/>  | <input type="radio"/> | <input type="radio"/> | <input type="radio"/> |
| Dual Control Air Comfort Mattress - King (72" x 80")  |   | <input type="radio"/>  | <input type="radio"/>  | <input type="radio"/> | <input type="radio"/> | <input type="radio"/> |
| Memory Foam King Mattress (72" x 80")                 |   | <input type="radio"/>  | <input type="radio"/>  | <input type="radio"/> | <input type="radio"/> | <input type="radio"/> |
| Power Smart Bed with Memory Foam - Queen              |   | <input type="radio"/>  | <input type="radio"/>  | <input type="radio"/> | <input type="radio"/> | <input type="radio"/> |
| Power Smart Bed with Memory Foam - King               |   | <input type="radio"/>  | <input type="radio"/>  | <input type="radio"/> | <input type="radio"/> | <input type="radio"/> |

**BATH**

|                                |   |   |  |              |                       |                       |
|--------------------------------|---|---|--|--------------|-----------------------|-----------------------|
| <b>Standard on All Models:</b> | <ul style="list-style-type: none"> <li>Solid Surface Shower with Glass Door</li> <li>Medicine Cabinet with Vanity Lights</li> </ul> | <ul style="list-style-type: none"> <li>Solid Surface Vanity Top &amp; Bowl</li> <li>Skylight in Shower &amp; LED Light</li> </ul> | <ul style="list-style-type: none"> <li>Roof Vent Fan</li> <li>Electric Flush Toilet</li> </ul> |              |                       |                       |
| <b>Available Options:</b>      |   | <b>37 AP</b>  | <b>40 AP</b>   | <b>40 SP</b> | <b>45 OP</b>          | <b>45 OPP</b>         |
| Tub in Place of Shower         |   | NA  | NA   | NA           | <input type="radio"/> | <input type="radio"/> |

All options may not be available in every model. Because of progressive improvements, specifications, standard & optional equipment are subject to change without notice or obligation. For a complete & up-to-date list of available options & specifications, as well as information on Tiffin's full line of motorhomes, visit [tiffinmotorhomes.com](http://tiffinmotorhomes.com).

**WARRANTY**

The Tiffin Five-Star Warranty.  
The best in the business, bar none.



At Tiffin Motorhomes, we build for quality first and foremost, limiting our production to just 12 coaches a day to ensure meticulous craftsmanship. It may not be the most business-savvy way to run a company but it is the best way. By investing the time and effort to do things right, we want you, as a Tiffin owner, to have the utmost confidence in your coach, as well as a peace of mind you won't find with other manufacturers. You see, not only do we stand proudly behind our product, we stand behind you as well.

★ **10**  
YEAR  
CONSTRUCTION  
WARRANTY

The structural integrity of the welded frame of entire coach is warranted for 10 years.

★ **5**  
YEAR  
DELAMINATION  
WARRANTY

We guarantee against all exterior fiberglass delamination or wall separation for 5 years.

★ **1**  
YEAR  
COMPREHENSIVE  
WARRANTY

Your coach is warranted against defects in materials and workmanship for 12 months, or 12,000 miles of use.

★ **1**  
YEAR  
COACH ROADSIDE  
SERVICES

Available through Coach-Net, the country's largest RV emergency road service, this program provides 24/7 access to responsive roadside and technical assistance.

★ **ONGOING  
OWNER  
SUPPORT**

No other motorhome company can compare with Tiffin's exceptional customer service. Email us at [service@tiffinmotorhomes.com](mailto:service@tiffinmotorhomes.com) or call: 256/356.8661.



## From uphill to downtown, the Allegro Bus is equipped to make all the right moves.

There's an art to engineering a motorhome, as elegantly demonstrated in the Allegro Bus' custom-built PowerGlide chassis. Designed to integrate precisely with the coach body, the PowerGlide earns superior marks in the industry for its engineering, construction, and durability. It also gets rave reviews from owners for its quiet ride, capable handling, and ability to tow heavy loads without complaint. Bob Tiffin sums it up best: "Nothing rides and drives like a PowerGlide."

### Among its superior features:



#### MULTIPLEX WIRING

The electrical systems of most Class A chassis are incredibly complex, requiring hundreds of wires. Not so in the PowerGlide. Our innovative chassis design employs a multiplex system that requires significantly less wiring. Fewer wires. Fewer problems.



#### EASIER SERVICE

Having the Tiffin name on the Bus from top to bottom means one-stop service for coach and chassis. It doesn't get easier than that.



#### SUPERIOR WARRANTY

The entire coach is covered by Tiffin's Five-Star Warranty, considered the best in the industry. The PowerGlide chassis carries an additional warranty backed by Tiffin: Three years or 50,000 miles against defects in materials and workmanship. Five years for engine and transmission.



#### EXTRA STORAGE

As a diesel pusher, the engine is at the rear of the coach. This chassis design opens up room for more under-coach storage and a more spacious driver's cab.



### A FAMILY BUSINESS BUILT AROUND YOURS.

The strong relationships we've built with you, our customers, are the heart and soul of our company. Now, with social media, we can connect more than ever before. We invite you to follow us on Facebook, Twitter, Instagram, and Pinterest.

LEFT TO RIGHT: VAN TIFFIN, LEX TIFFIN, BOB TIFFIN, TRENT TIFFIN, AND TIM TIFFIN

[GO TO TIFFINMOTORHOMES.COM](http://www.tiffinmotorhomes.com)

Visit us on the web for more information on the 2017 Bus and all 2017 Tiffin Motorhomes, along with the latest product and specification updates.

FOR PARTS & SERVICE CALL [256/356.8661](tel:2563568661)

[FACEBOOK.COM/TIFFINMOTORHOMES](https://www.facebook.com/tiffinmotorhomes)

[TWITTER.COM/TIFFINMOTORHOME](https://twitter.com/tiffinmotorhome)

[INSTAGRAM.COM/TIFFINMOTORHOMES](https://www.instagram.com/tiffinmotorhomes)

[PINTEREST.COM/TIFFINMOTORHOME](https://www.pinterest.com/tiffinmotorhome)



Some interior furnishings not included. Unless where noted, all content ©2017 Tiffin Motorhomes, Inc. Allegro®, Allegro Breeze®, Allegro Red®, Phaeton®, Allegro Bus®, Zephyr®, Roughing It Smoothly®, Open Road®, PowerGlide®, and Pusher® are registered trademarks of Tiffin Motorhomes, Inc. All rights reserved.