



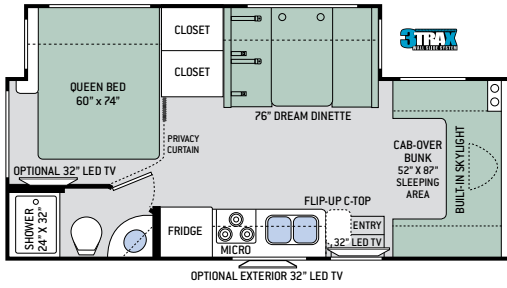
# QUANTUM<sup>®</sup>

BY THOR MOTOR COACH

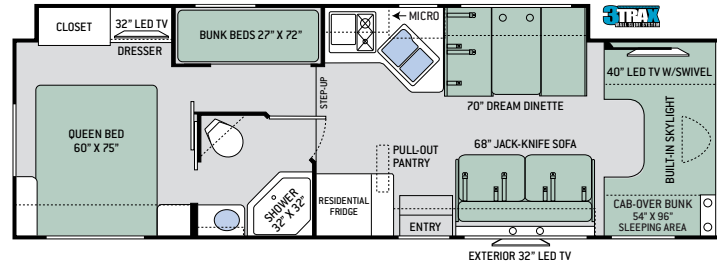
*No matter how you choose to spend your time or your money, the Quantum fits your needs.*

# Floor Plans

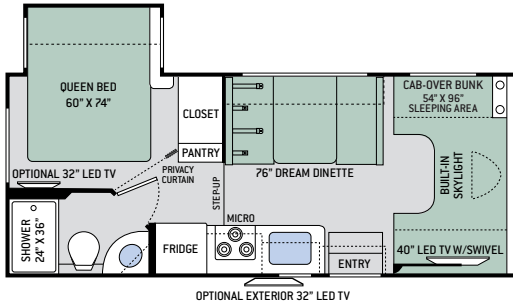
**KM24**



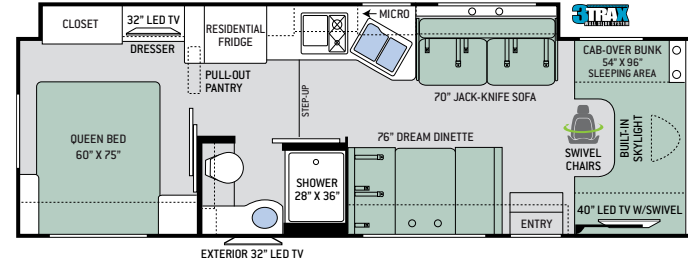
**LF31**



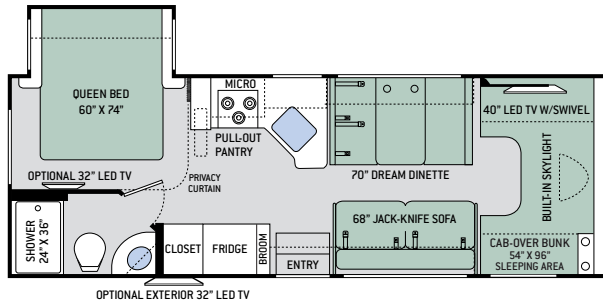
**GR22**



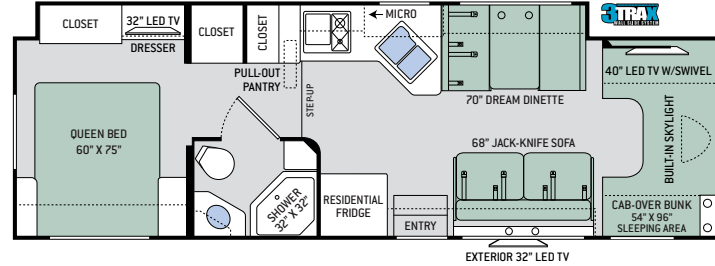
**PD31**



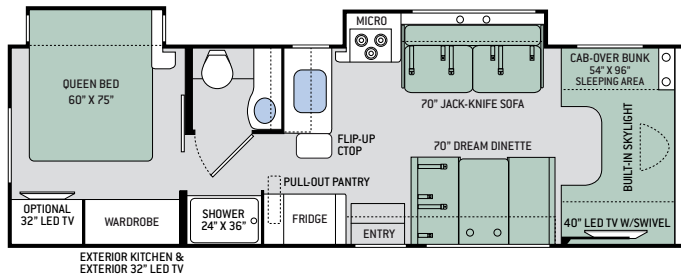
**RS26**



**WS31**



**RQ29**



3TRAX™ is our in-wall slideout system, housing all the moving and mechanical parts within the sidewall of the motorhome. This triple track design supports large rooms, like those found in full-wall slideouts, ensuring simple, reliable, maintenance-free operation. What sets 3TRAX™ apart is the patented rail system, in-floor roller guides and electric motor design. For more information, visit [thormotorcoach.com/3TRAX](http://thormotorcoach.com/3TRAX).

## Specifications

	KM24	GR22	RS26	RQ29	LF31	PD31	WS31
Chassis	Mercedes-Benz	Ford / Chevy	Ford / Chevy	Ford	Ford	Ford	Ford
Gross Vehicle (GVWR)	11,030	12,500 / 12,300	12,500 / 14,200	14,500	14,500	14,500	14,500
Gross Combined (GCWR)	15,250	18,500 / 16,000	18,500 / 20,000	22,000	22,000	22,000	22,000
Wheel Base	170.3"	158" / 159"	183" / 184"	212"	223"	212"	223"
Exterior Length (w/out ladder)	24'-8"	24' / 24'-6"	27'-6" / 28'	30'-11"	32'-7"	31'-3"	32'-2"
Exterior Height (w/AC)	11'-10"	10'-10"	11'-1"	11'-1"	11'-1"	11'-1"	11'-1"
Exterior Width (w/out mirrors)	90"	99"	99"	99"	99"	99"	99"
Interior Height	84"	84"	84"	84"	84"	84"	84"
Awning Size	15'	15'	18'	15'	16'	16'	16'
Fuel (gal)	26.4	55 / 57	55 / 57	55	55	55	55
LPG (lbs)	68.2	40.9	40.9	40.9	40.9	40.9	40.9
Fresh/Waste/Gray Water (gal)	30 / 24 / 38	40 / 29 / 25	40 / 29 / 25	40 / 28 / 28	40 / 28 / 28	40 / 28 / 28	40 / 28 / 28
Water Heater (gal)	Instant Tankless	Instant Tankless	Instant Tankless	Instant Tankless	Instant Tankless	Instant Tankless	Instant Tankless
Furnace (BTUs)	30,000	19,000	30,000	30,000	30,000	30,000	30,000
Exterior Storage Capacity (cu. ft.)	48.5	30.9	40	45.2	57.5	52.9	54.6



# Interior Decor



ARCTIC FROST



REGAL ONYX



SPARKLING WINE



HIGH-GLOSS GLAZED MILAN CHERRY



HIGH-GLOSS GLAZED MONTEREY MAPLE



RESIDENTIAL VINYL FLOORING



KITCHEN COUNTERTOP

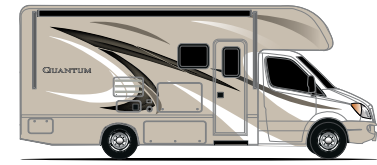


DINETTE COUNTERTOP



BED & BATH COUNTERTOP

# Exterior Graphics



BLACK JACK (KM24)



ROYAL FLUSH (KM24)



BLACK JACK



ROYAL FLUSH



HIGH ROLLER PARTIAL-PAINT (N/A KM24)



JACKPOT PARTIAL-PAINT (N/A KM24)

# Features

## CONSTRUCTION & EXTERIOR

- Ford® E-Series or Chevrolet® Dually Chassis (GR22 & RS26)
- Ford® E-Series Chassis (RQ29, LF31, PD31 & WS31)
- Mercedes-Benz Sprinter Diesel Chassis (KM24)
- One-Piece Fiberglass Front Cap with LED Accent Lighting
- Built-In Skylight with Electric Shade
- HD-MAX® Exterior with Graphics Package
- MEGA-Storage™ Compartment (GR22 & RS26)
- Lighted Rotocast Storage Compartments
- Power Patio Awning with Integrated LED Lighting
- Slideout Room Topper Awning(s)
- Electric Entry Step (KM24)
- Roof Ladder
- Framed Slider Windows (KM24, GR22, RS26 & RQ29)
- 5,000-lb. Trailer Hitch with 7-pin Round Connector (KM24)
- 8,000-lb. Trailer Hitch with 7-pin\* Round Connector (N/A KM24)

## CONSTRUCTION & EXTERIOR OPTIONS

- Partial-Paint on HD-MAX® Exterior with Graphics Package (N/A KM24)
- Automatic Leveling Jacks (OPT RQ29 / STD LF31, PD31 & WS31)
- Electric Stabilizing System (OPT GR22 & RS26 / STD KM24)

## AUTOMOTIVE & COCKPIT

- Touchscreen Dash Radio with CD Player & Back-Up Monitor
- Leatherette Swivel Captain's Chairs (PD31)
- Power Windows & Door Locks
- Deluxe Exterior Mirrors (N/A KM24)
- Deluxe Heated/Remote Exterior Mirrors (KM24)
- Emergency Engine Start Switch (N/A KM24)
- Aluminum Running Boards (N/A KM24)
- Stainless Steel Wheel Liners
- Keyless Entry System
- Valve Stem Extenders

## AUTOMOTIVE & COCKPIT OPTIONS

- Heated/Remote Exterior Mirrors w/Integrated Side View Cameras (OPT GR22 & RS26 / STD RQ29, LF31, PD31 & WS31)
- Leatherette Captain's Chairs (OPT GR22 & RS26 / STD KM24, RQ29, LF31 & WS31)
- Power Driver's Seat (RQ29, LF31 & WS31)
- Cockpit Carpet Mat (STD KM24)

## INTERIOR

- Rubber Tread Entry Steps with Lighted Step Well
- Ceiling Ducted Air Conditioning System (N/A GR22)

\*4-pin Round Connector in Chevrolet Chassis

**IMPORTANT—PLEASE READ:** This brochure reflects product design, fabrication, material, components and specifications at the date of printing, which date is disclosed below. Please visit us online at [ThorMotorCoach.com](http://ThorMotorCoach.com) or consult with your selling dealership for the latest in standards, options, specification and technical information. Photographs in the brochure may depict optional equipment or may only be available in certain floor plans. Components, appliances and the chassis may have been manufactured in a calendar year before the vehicle's designated model year. All capacities are approximate. The actual length of the vehicle may differ from that indicated in the brochure due to variances in the manufacturing processes and/or installed components. All dry weights are based on standard model features and do not include optional features or equipment. Component part and appliance manufacturers issue limited warranties covering portions of the vehicle not covered under the limited warranty we issue. Copyright Thor Motor Coach, Inc. © OH 04/15/17

- LED Lighting
- Cab-Over Bunk Ladder
- Leatherette Jack-Knife Sofa (RS26, RQ29, LF31, PD31 & WS31)
- Leatherette Dream Dinette® Booth
- High-Gloss Glazed Cabinetry with Solid Wood Raised Panel Cabinet Doors, Hidden Hinges & Nickel Finish Hardware
- Full Extension Metal Ball-Bearing Drawer Guides
- Window Privacy Roller Shades

## INTERIOR OPTIONS

- Cab-Over Child Safety Net
- 12-volt Attic Fan with Cover in Cab-Over Bunk
- Single Child Safety Tether in Dinette
- Dual Child Safety Tethers in Dinette

## KITCHEN

- 6 cu. ft. Double Door Refrigerator w/Black Panel Inserts (KM24, GR22, RS26 & RQ29)
- Stainless Steel Sink & Single Handle Faucet w/Pull-Down Sprayer
- 3-Burner Gas Cooktop (KM24)
- Recessed 3-Burner Gas Cooktop w/Glass Cover (GR22, RS26 & RQ29)
- 2-Burner Gas w/Single Induction Cooktop (LF31, PD31 & WS31)
- Microwave Oven (GR22, RS26 & RQ29)
- Flip-Up Countertop Extension (KM24 & RQ29)
- Pop-Up Countertop Outlet (LF31, PD31 & WS31)
- Stainless Steel Undermount Kitchen Sink
- Solid Surface Kitchen Countertops
- Silverware Tray

## KITCHEN OPTIONS

- Recessed 3-Burner Gas Cooktop/Oven with Glass Cover (OPT GR22, RS26 & RQ29)
- Convection Microwave Oven (OPT GR22, RS26 & RQ29 / STD KM24)

## BEDROOM & BATHROOM

- Denver Mattress® Queen Size Bed
- Bedspread & Pillow Shams
- Designer Headboard (GR22, RS26 & RQ29)
- Shower with Retractable Door (KM24, GR22 & RS26)
- Shower with Glass Door (RQ29, LF31, PD31 & WS31)
- Foot Flush Toilet
- 12-volt Attic Fan with Cover in Bedroom

## ENTERTAINMENT

- 32" LED TV & Blu-Ray DVD Player (KM24)

- 40" LED TV & Blu-Ray DVD Player on Manual Swivel in Cab-Over (N/A KM24)
- Two (2) 13" LED TVs w/DVD Player in Bunk Bed Area (LF31)
- Power Charging Center for Electronics (LF31, PD31 & WS31)
- Exterior Kitchen with 2.6 cu. ft. Refrigerator, Sink, 1000-watt Inverter & 32" LED TV on Manual Swivel (RQ29)
- Bluetooth® Coach Radio with Exterior Speakers (LF31, PD31 & WS31)

## ENTERTAINMENT OPTIONS

- 32" LED TV in Bedroom (OPT KM24, GR22, RS26 & RQ29 / STD LF31, PD31 & WS31)
- 32" LED Exterior TV on Manual Swivel (OPT KM24, GR22, RS26 / STD LF31, PD31 & WS31)

## ELECTRICAL & PLUMBING

- Onan® RV QG 4000 Gas Generator (N/A KM24)
- Onan® RV QG 3600 LP Generator (KM24)
- 30-amp Shoreline Power Cord
- Dual Auxiliary House Batteries with Tray that Holds up to 4 Batteries (LF31, PD31 & WS31)
- 13,500 BTU Roof Front Air Conditioner (KM24, GR22, RS26)
- Exterior LP Connection
- Pre-Wired for Solar Charging
- Whole Coach Water Filtration System (LF31, PD31 & WS31)
- Instant Tankless Water Heater
- Black Tank Flush System (LF31, PD31 & WS31)
- Enclosed Sewer Area for Sewer Tank Valves (LF31, PD31 & WS31)
- Outside Shower

## ELECTRICAL & PLUMBING OPTIONS

- Onan® RV QD 3200 Diesel Generator (KM24)
- 15,000 (IPO 13,500) BTU Roof Front Air Conditioner (OPT KM24, GR22 & RS26 / STD RQ29, LF31, PD31 & WS31)
- Holding Tanks with Heat Pads (OPT KM24, GR22, RS26 & RQ29 / STD LF31, PD31 & WS31)
- Second Auxiliary House Battery (OPT KM24, GR22 & RS26 / STD RQ29)

## DIAMOND PACKAGE – STANDARD ON LF31, PD31 & WS31

- Frameless Slider Windows
- Stainless Steel 30" Over-the-Range Convection Microwave Oven
- 11 cu. ft. Residential Refrigerator w/Ice Maker (LF31 & PD31)
- 16 cu. ft. Residential Refrigerator w/Ice Maker (WS31)
- 1800-watt Inverter
- Automatic Generator Start
- Rapid Camp® Wireless Control System

YOUR LOCAL THOR MOTOR COACH DEALER

**LA MESA RV**  
EXPERIENCE LIFE

[www.lamesarv.com](http://www.lamesarv.com)  
800-496-8778



Made to fit.

[thormotorcoach.com/quantum](http://thormotorcoach.com/quantum)



P.O. Box 1486, Elkhart, IN 46515 Sales Department: 800.860.5658 Customer Service: 877.855.2867