

2017 FLEETWOOD PACE ARROW/PACE ARROW LXE

2017

CLASS A DIESEL



# PACE ARROW/PACE ARROW LXE



REVGROUP



# 21 REASONS WHY FLEETWOOD IS AMERICA'S FAVORITE

Mile after mile, decade after decade, more families trust Fleetwood. The open road is our proof. With more Fleetwood motorhomes on the road today than any other manufacturer\*, our brand prides itself on building dependable products that help families reconnect one journey at a time — over and over again. At Fleetwood, we constantly redefine value because understanding your every need is just the start to delivering peace-of-mind at every turn.



## **F-21 Advantage: Fleetwood 21<sup>st</sup> century engineering, manufacturing, and materials**

Fleetwood RV offers a 21<sup>st</sup> century, industry-leading advantage—a quality construction approach to motorhome engineering, manufacturing and materials. The “F” stands for Fleetwood RV. The “21” stands for 21<sup>st</sup> century materials and construction techniques. F-21 is demonstrated by 21 key proof points that deliver unique advantages to Fleetwood owners and illustrate the quality for which Fleetwood RV is known industry-wide.

\*Based on IHS Automotive, Polk Recreational Vehicles in Operation (RVIO) as of 7/1/13.



The Pace Arrow 35M is shown in Spiced Java décor and Nottingham Cherry cabinetry.





# PACE ARROW

Fleetwood's legendary Pace Arrow returns. Together, the Pace Arrow moniker and the Fleetwood name, combine for a level of unrivaled value and unprecedented trust in this Class A Diesel motorhome.

Pace Arrow transforms the road into an inviting, spacious home, featuring an 84" interior height, pass-thru storage, and a whopping 90-gal. fuel tank. Hardwood cabinetry and plank-style flooring complete this package.

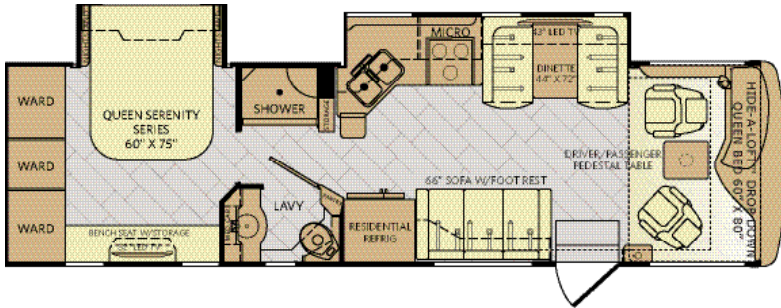
## TOP FEATURES

- 300HP (33D) or 340HP (35E, 35M, 36U) Cummins® ISB 6.7L Engine w/ Exhaust Brake
- 2100 MH Allison® 6-speed, Electronic-Shift Transmission (33D) or 2500 MH Allison® 6-speed, Electronic-Shift Transmission (35E, 35M, 36U)
- 90-Gallon Fuel Tank
- Impressive Pass-Thru Storage
- 84" Interior Height
- 12" x 24" Composite Plank-Style Flooring
- Hardwood Cabinets, Doors and Drawers
- Hide-A-Loft™ Drop-Down Queen Bed
- Central Vacuum System
- Residential Refrigerator
- Memory Foam Mattress

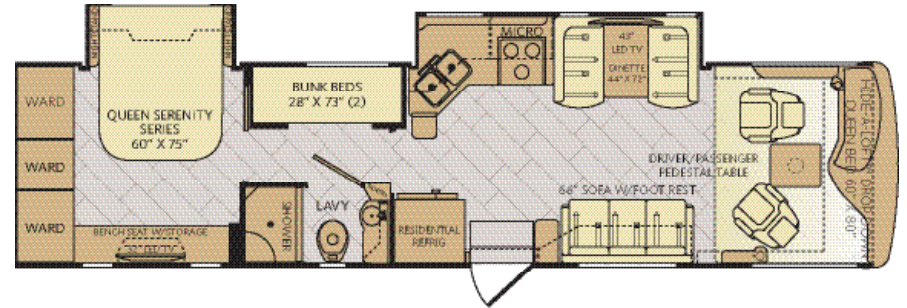


# PACE ARROW FLOORPLANS & EXTERIORS CHOICES

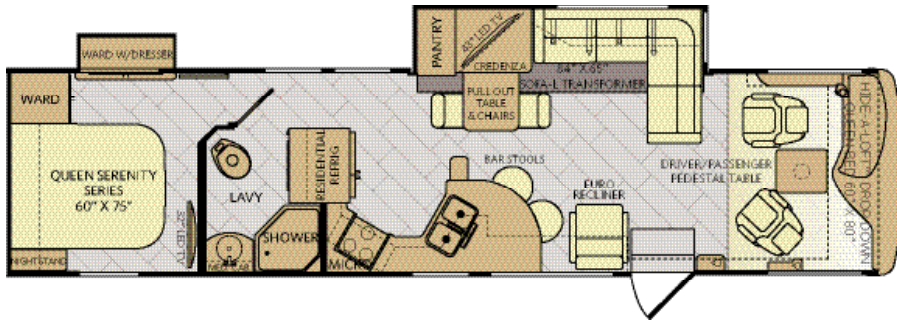
33D Options: 126, 815



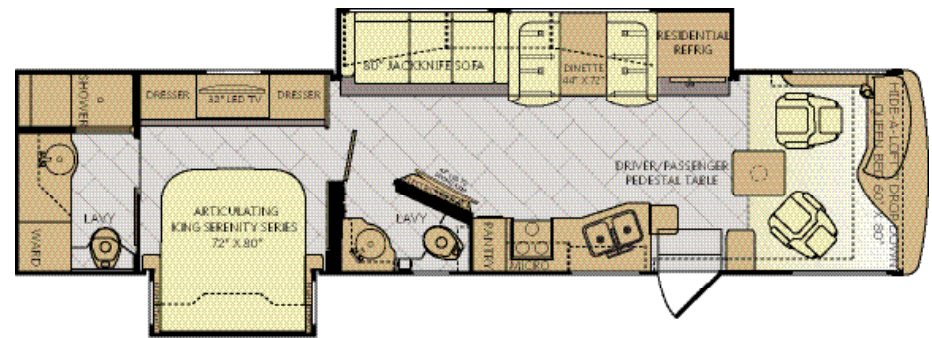
35E Options: 126, 157, 815



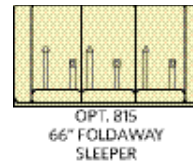
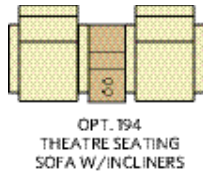
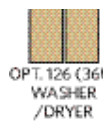
35M Options: 126



36U Options: 126, 194, 830



## Available Options



## Caribbean Slate



## Cosmic Eclipse



## Silver Garnet





# PACE ARROW STANDARDS & OPTIONS

## INTERIOR THROUGHOUT

- 12" x 24" Composite Plank Style Vinyl Flooring
- 120V/12V AC/DC Converter
- 20,000/25,000 Btu/h Furnaces (33D, 35E)
- 20,000/34,000 Btu/h Furnaces (36U)
- 34,000 Btu/h Furnace (35M)
- 6 Gallon Quick Recovery Water Heater (Gas/Electric)
- 84" Interior Ceiling Height
- Auto Generator Start
- Bedroom Heat Pump
- Central Vacuum System
- Centralized Control Monitoring
- Crown Molding
- Dedicated Full-Length, Metallic A/C Ducting
- Deluxe Roller Bearing, Full Extension Drawer Guides & Transit-Ship Locks
- Demand Water Pump w/Filter
- Driver/Passenger Pedestal Table
- Dual Lo-Profile, High-Efficiency A/C w/Chill Grills & Bedroom Heat Pump
- Fan-Tastic® Power Roof Vent w/ Wall Switch (2)
- Flat Interior Ceiling
- Four 6V Deep-Cycle House Batteries
- Hardwood Cabinet Doors/Drawers
- HDMI Video System
- Hide-A-Loft™ Drop Down Queen Bed
- LED Lighting
- Manual Day/Night Double Roller Shades
- Ozite Lined Storage
- Passenger Cup Holder Console w/Integrated Magazine Rack
- Power Passenger Chair w/Power Footrest
- Satellite Radio (Subscription Required)
- Soft-Touch Vinyl Ceiling
- Spacious Wide Body Design
- Tuff-Pex™ Plumbing System
- Wall Switches (Includes Switches for Ceiling Lights & Vents)
- Water Heater Bypass
- Waterpump Switches in Multiple Locations
- Whole Coach Water Filtration System
- Wood Finish Return Air Intake for Furnace

### OPTIONS

- CSA Package (Canadian Specs)\*\*

## DRIVER CONVENIENCE

- (2) 12V Power Outlets at Dash
- 110V Power Outlet at Dash
- 3-Point Seatbelts at Driver & Front Passenger Seats w/ Adjustable Shoulder Straps
- Air Suspension Dump Switch
- AM/FM/DVD Touch Screen Radio w/ Main/Auxiliary Power Switch
- Automotive Wrap-Around Dash
- Auxiliary Start Circuit Switch
- Color Back-Up Monitor w/Side Cameras Integrated in Mirrors
- Cruise Control
- Denso® High-Output Auto A/C Heater Combo
- Driver & Passenger Curtains
- Driver Console Cup Holders
- Driver/Front Passenger Soft-Touch Captain's Chairs w/ Reclining Back/Slide Controls w/ Power Driver Seat
- Dual Dash Monitors
- Easy-Access Battery Disconnect System
- Front Power Roller Shades/Blinds
- Intermittent Wiper Control
- Remote Heated Power Exterior Mirrors w/Turn Signals & Sideview Cameras
- Soft-Touch Automotive Dash
- Tilt/Telescoping Steering Wheel

## LIVING ROOM

- 43" LED HDTV Blu-ray™ Ready
- 66" Sofa w/Footrest (33D, 35E)
- Entry Assist Handle
- Fireplace (36U)
- Soft Touch Residential Style Seating
- Select Hardwood Overhead Face Frames
- BOSE Soundbar (36U)
- Sony® 5.1 Home Theater System

- w/Built-in AM/FM/DVD & Surround Sound Speakers
- TV Antenna w/Signal Booster

### OPTIONS

- Theatre Seating Sofa w/Recliners (36U)
- Facing Dinette (36U)
- 66" Foldaway Sleeper (33D, 35E)

## GALLEY

- 3 Burner Range w/High Output/ Piezo Ignitor w/Cooktop Cover
- Adjustable Cabinet Shelves (Select Cabinets)
- Cabinet Toe Kicks
- Dream Dinette Mechanism
- Full Mosaic Glass Tile Backsplash
- Galley Window w/Mini Blinds
- Select Hardwood Overhead Face Frames
- Solid Surface Dinette Tabletop
- Large, 50/50 Dual Stainless-Steel Sink
- LED Task Lighting
- Polished Solid-Surface Countertop w/Deco Edge
- Pull Out Pantry
- Residential Refrigerator w/2000W Inverter & 4 House Batteries
- Stainless Steel Convection Microwave Oven w/Built-in Range Hood & Lights
- Single-Handle Galley Faucet w/ Pull Down Sprayer
- Polished Solid-Surface Dinette Table & Range Covers
- Under-Galley Shelving & Wastebasket

## BEDROOM

- 32" LED HDTV
- Bedspread w/Decorative Pillows
- Bunk Beds (35E)
- Dual 110V Outlets (Select Models)
- Dual Panel TV's (35E)
- Overhead Cabinets
- King Exclusive Dream Easy Series 72" x 80" (36U)
- Queen Dream Easy Memory Foam Mattress (33D, 35E, 35M)
- Rear Speakers
- Remote Generator Start Switch
- Under Bed Storage (33D, 35M, 35E)
- Wardrobe w/Cedar Lining

### OPTIONS

- Side-by-Side Washer/Dryer (36U)
- Washer/Dryer Combo (33D, 35E, 35M)

## BATHROOM

- A/C Venting
- Adjustable Shelving (Select Cabinets)
- Hardwood Bath Door/Trims
- LED Lighting Over Sink
- Mosaic Glass/Stone Tile Back Splash
- One Piece Fiberglass Shower w/ Convenience Shelf, Skylight & Low Threshold
- Polished Chrome Double-Handle Faucet
- Polished Chrome Towel Bars & Rings
- Porcelain Toilet w/Water Saver
- Stainless Steel Sink
- Vacuum Flush Toilet Bath

## SAFETY/CONVENIENCE

- 30" Wide Entry Door
- Carbon Monoxide, Propane & Smoke Detector/Alarm
- Central Electrical Panel
- Energy Management System (EMS) w/Soft-Start
- Fire Extinguisher
- Multiple Seatbelt Locations
- Neutral Loss Protection



## EXTERIOR THROUGHOUT

- 50-Amp Service w/LED Power Cord Indicators
- 6.0 kW Onan® Quiet Diesel Generator (33D, 35E, 35M, 36U)
- Aluminum Bus-Style Side Swing Luggage Doors
- Aluminum Extruded Slide Ramps
- Awning Rail/Drip Molding
- Clear Protective Front Mask
- Door-Side 110V Patio Receptacle
- Dryseal™ Edge Coating (Water-Wicking Wall Edge Coating)
- Dual Glazed Windows
- Electrical System w/Neutral Loss Protection
- Exterior Entertainment Center w/32" LED HDTV & High Output, Splashproof AM/FM/DVD Sound System
- Fiberglass Rear Cap w/High-Mounted Center Brake Light
- Fiberglass Wheel-Well Trims
- Five-Point Build System™
- Frameless Flush Mount Windows
- Full-Body Paint
- LED Clearance Lights
- Park Cable Receptacle
- Pet Window
- Power Awning w/LED Light Strip & Wind Sensor React
- Pre-Wired For Easy DSS Antenna Installation
- Seamless Beltline Trim
- Solar Pre-Wire Kit
- Tapered Slideout Box Tops & Debris Awnings
- Tuff-Roof™ Low-Maintenance Roof System
- Utility Compartment w/Exterior Shower
- Water Pump Switch (located in service compartment)

## AUTOMOTIVE

- 22.5" Aluminum Wheels
- Fog Lamps
- Large One-Piece Bonded Windshield
- Mud Flaps
- Single-Motor Windshield Wipers w/Wet Arm
- Under-hood Utility Light

## SAFETY/CONVENIENCE

- 20' Sewer Hose
- 4-Wheel ABS Brakes
- (4) 6V/Deep-Cycle House Batteries
- Automatic Hydraulic Leveling Jacks
- Automotive Safety Glass
- Daytime Running Lights
- Easy-Sweep Flooring at Entry Step
- Entry Assist Handle
- Entry Door w/Screen Door & Deadbolt Lock
- Large Egress Window in Bedroom
- Lighted Entry Assist Handle
- Porch Light (Door-side)
- Power Entry Step
- Rear, Front and Side Marker Lights (Select LED)
- Toilet Tank San-T-Flush™ System
- Touch Sensor Tank Monitoring System
- Utility Compartment w/Exterior Shower

## STORAGE

- Continuous One-Piece Compartment Seals
- Lighted Compartments
- Pass-Through Storage
- Rotocast Molded Storage Boxes

## BODY STRUCTURE

- Basement Storage
- Heated Water & Holding Tank Compartments
- Power Bridge® Chassis Construction
- Powerframes™ Precision, Welded
- Aluminum Interlocking Frames
- Powerlock System™ (Interlocking Floors, Walls, & Ceiling)
- Quiet Cool Ducted A/C
- Radiused Entry Door
- Raised Space Frame Foundation
- Solid Bead-Foam Engineered Fit Insulation™

# PACE ARROW LXE

The Pace Arrow LXE oozes luxury, so it makes perfect sense why Fleetwood RV builds America's Favorite Motorhomes.

The LXE is loaded. Cozy up on Villa furniture while enjoying an electric fireplace and your motorhome's very own LG television, A/V electronics, all powered by an 8,000-watt Onan Quiet Diesel generator. A hardwood ceiling feature and plank-style flooring complete this package.

## TOP FEATURES

- 340HP Cummins® ISB 6.7L Engine
- 8.0 Kw Onan® Quiet Diesel Generator
- Rand McNally GPS
- Villa® Furniture
- Electric Fireplace (38K)
- LG® TV & A/V Electronics
- Hardwood Window Valances
- Hardwood Ceiling Treatment
- 12" x 24" Composite Plank-Style Flooring
- Power Awning w/LED Light Strip
- Power Cord Reel
- Central Vacuum
- Front Compartment Tray



The Pace Arrow LXE 38K is shown in Spiced Java décor and Nottingham Cherry cabinetry.

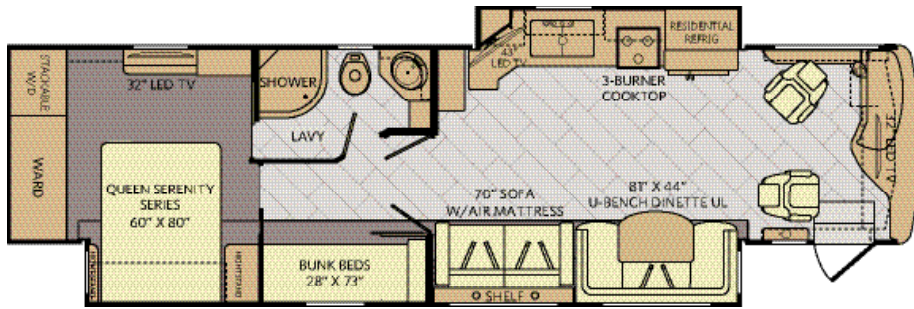




# PACE ARROW LXE FLOORPLANS & EXTERIORS CHOICES

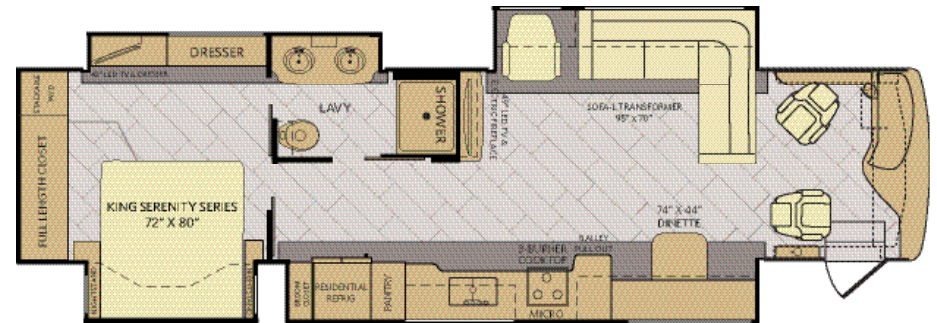
38B

Options: 833



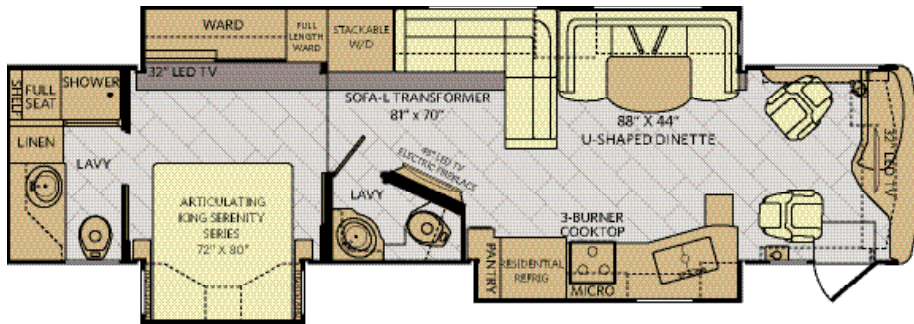
38F

Options: 203, 830

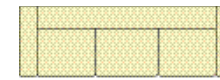


38K

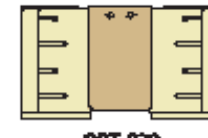
Options: 833



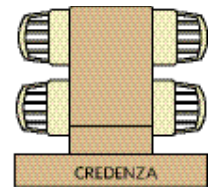
Available Options



OPTION 203  
95" x 70" SOFA



OPT. 830  
FACING DINETTE



OPT. 833  
FREE-STANDING DINETTE  
WITH CRENZNA

Aztec Quartz



Spiced Java





# PACE ARROW LXE STANDARDS & OPTIONS

## INTERIOR THROUGHOUT

- 12" x 24" Composite Plank Style Vinyl Flooring
  - 120V/12V AC/DC Converter
  - 20,000/25,000 Btu/h Furnaces (38B)
  - 25,000/30,000 Btu/h Dual Furnaces (38F, 38K)
  - Water Heater 16-Gallon Output
  - 84" Interior Ceiling Height
  - Auto Generator Start
  - Bedroom Heat Pump
  - Ceiling Plenum
  - Central Vacuum System
  - Centralized Control Monitoring
  - Crown Molding
  - Dedicated Full-Length, Metallic A/C Ducting
  - Deluxe Roller Bearing, Full Extension Drawer Guides & Transit-Ship Locks
  - Demand Water Pump w/Filter
  - Dual Roof-Mounted, High-Efficiency A/C w/Solar Panel, Chill Grills & Bedroom Heat Pump
  - Fan-Tastic® Power Roof Vent w/Wall Switch (2)
  - Flat Interior Ceiling
  - Four 6V Deep-Cycle House Batteries
  - Hardwood Cabinet Doors/Drawers
  - HDMI Video System
  - LED Lighting
  - Manual Day/Night Double Roller Shades
  - Ozite Lined Storage
  - Passenger Cup Holder Console w/Integrated Magazine Rack
  - Power Passenger Chair w/Power Footrest
  - Satellite Radio (Subscription Required)
  - Soft-Touch Vinyl Ceiling
  - Spacious Wide Body Design
  - Tuff-Pex™ Plumbing System
  - Wall Switches (Includes Switches for Ceiling Lights & Vents)
  - Wall-to-Wall Vinyl Tile Flooring
  - Water Heater Bypass
  - Waterpump Switches in Multiple Locations
  - Whole Coach Water Filtration System
  - Wood Finish Return Air Intake for Furnace
  - Quiet Cool Ducted A/C
- OPTIONS**
- CSA Package (Canadian Specs)\*\*

## DRIVER CONVENIENCE

- (2) 12V Power Outlets at Dash
- 110V Power Outlet at Dash
- 3-Point Seatbelts at Driver & Front Passenger Seats (w/Adjustable Shoulder Straps)
- Air Suspension Dump Switch
- Automotive Wrap-Around Dash
- Auxiliary Start Circuit Switch
- Color Back-Up Monitor w/Side Cameras Integrated in Mirrors
- Cruise Control
- Denso® High-Output Auto A/C Heater Combo
- Driver & Passenger Curtains
- Driver Console Cup Holders
- Driver Passenger Soft-Touch Captain's Chairs w/Reclining Back/Slide Controls w/Power Driver Seat
- Dual Dash Monitors
- Easy-Access Battery Disconnect System
- Front Power Roller Shades/Blinds
- Intermittent Wiper Control
- Remote Heated Power Exterior Mirrors w/Turn Signals & Sideview Cameras
- Soft-Touch Automotive Dash
- Tilt/Telescoping Steering Wheel
- Touch Screen Radio w/Built-In Rand McNally GPS w/ Main/Auxiliary Power Switch

## LIVING ROOM

- 43" LED HDTV (38B, 38K)
  - 5.1 Home Theater System w/Built-in AM/FM/DVD & Surround Sound Speakers
  - Entry Assist Handle
  - Fireplace (38F, 38K)
  - Soft Touch Residential Style Seating
  - Select Hardwood Overhead Face Frames
  - TV Antenna w/Signal Booster
  - BOSE Soundbar (38F)
  - 49" LED HDTV (38F)
  - Booth Dinette (38F)
- OPTIONS**
- Free-Standing Dinette w/Credenza (38B, 38K)
  - Facing Dinette (38F)
  - 95"x70" Sofa (38F)

## GALLEY

- 3 Burner Range w/High Output/Piezo Ignitor w/Cooktop Cover
  - Adjustable Cabinet Shelves (Select Cabinets)
  - Cabinet Toe Kicks
  - Full Mosaic Glass Tile Backsplash
  - Galley Window w/Mini Blinds
  - Select Hardwood Overhead Face Frames
  - Solid Surface Dinette Tabletop
  - Large, 50/50 Dual Stainless-Steel Sink
  - LED Task Lighting
  - Polished Solid-Surface Countertop w/Deco Edge
  - Pull Out Pantry (38F)
  - Residential Refrigerator w/2000W Inverter & 4 House Batteries
  - Convection Stainless Steel Microwave Oven w/Built-in Range Hood & Lights
  - Single-Handle Galley Faucet w/Pull Down Sprayer
  - Polished Solid-Surface Dinette Table & Range Covers
  - Under-Galley Shelving & Wastebasket
- OPTIONS**
- Dream Dinette Mechanism (38F)

## BEDROOM

- 32" LED HDTV
- Bedspread w/Decorative Pillows
- Bunk Beds (38B)
- Dual 110V Outlets (Select Models)
- Dual Panel TV's (38B)
- King Exclusive Dream Easy Series (38K)
- King Memory Foam Mattress (38F)
- Queen Dream Easy Memory Foam Mattress (38B)
- Rear Speakers
- Overhead Cabinets
- Remote Generator Start Switch
- Under Bed Storage
- Wardrobe w/Cedar Lining
- 43" LED HDTV (38F)



## BATHROOM

- A/C Venting
- Adjustable Shelving (Select Cabinets)
- Glass Shower Enclosure w/Skylight & Low Threshold
- Hardwood Bath Door/Trims
- LED Lighting Over Sink
- Mosaic Glass/Stone Tile Back Splash
- One Piece Fiberglass Shower w/Convenience Shelf
- Polished Chrome Double-Handle Faucet
- Polished Chrome Towel Bars & Rings
- Porcelain Toilet w/Water Saver
- Stainless Steel Sink
- Vacuum Flush Toilet Bath (38F, 38K)

## SAFETY/CONVENIENCE

- 30" Wide Entry Door
- Carbon Monoxide, Propane & Smoke Detector/Alarm
- Central Electrical Panel
- Energy Management System (EMS) w/Soft-Start
- Fire Extinguisher
- Multiple Seatbelt Locations
- Neutral Loss Protection



Images shown on this page are from the Pace Arrow LXE 38K.

## EXTERIOR THROUGHOUT

- 50-Amp Service w/LED Power Cord Indicators
- 8.0 kW Onan® Quiet Diesel Generator (38B, 38K)
- Aluminum Bus-Style Side Swing Luggage Doors
- Aluminum Extruded Slide Ramps
- Awning Rail/Drip Molding
- Clear Protective Front Mask
- Door-Side 110V Patio Receptacle
- Dryseal™ Edge Coating (Water-Wicking Wall Edge Coating)
- Dual Glazed Windows
- Electrical System w/Neutral Loss Protection
- Exterior Entertainment Center w/32" LED HDTV & High Output, Splashproof AM/FM/DVD Sound System
- Fiberglass Rear Cap w/High-Mounted Center Brake Light
- Fiberglass Wheel-Well Trims
- Five-Point Build System™
- Frameless Flush Mount Windows
- Full-Body Paint
- LED Clearance Lights
- Park Cable Receptacle
- Power Awning w/LED Light Strip & Wind Sensor React
- Seamless Beltline Trim
- Tapered Slideout Box Tops & Debris Awnings
- Tuff-Roof™ Low-Maintenance Roof System
- Utility Compartment w/Exterior Shower
- Water Pump Switch (located in service compartment)

## AUTOMOTIVE

- 22.5" Aluminum Wheels
- Large One-Piece Bonded Windshield
- Mud Flaps
- Single-Motor Windshield Wipers w/Wet Arm
- Under-hood Utility Light

## SAFETY/CONVENIENCE

- 20' Sewer Hose
- 4-Wheel ABS Brakes
- (4) 6V/Deep-Cycle House Batteries
- Automatic Hydraulic Leveling Jacks
- Automotive Safety Glass
- Daytime Running Lights
- Easy-Sweep Flooring at Entry Step
- Entry Assist Handle
- Entry Door w/Screen Door & Deadbolt Lock
- Large Egress Window
- Lighted Entry Assist Handle
- Porch Light (Door-side)
- Power Entry Step
- Rear, Front and Side Marker Lights (Select LED)
- Toilet Tank San-T-Flush™ System
- Touch Sensor Tank Monitoring System
- Utility Compartment w/Exterior Shower

## STORAGE

- Continuous One-Piece Compartment Seals
- Lighted Compartments
- Pass-Through Storage
- Rotocast Molded Storage Boxes

## BODY STRUCTURE

- Basement Storage
- Heated Water & Holding Tank Compartments
- Power Bridge® Chassis Construction
- Powerframes™ Precision, Welded
- Aluminum Interlocking Frames
- Powerlock System™ (Interlocking Floors, Walls, & Ceiling)
- Radiused & Cambered Entry Door
- Raised Space Frame Foundation
- Solid Bead-Foam Engineered Fit Insulation™

1 | Sofa 2 | Accent 3 | Bedspread 4 | Countertop 5 | Flooring 6 | Carpet

## Autumn Wheat



## Nottingham Cherry



## Aztec Quartz



1



2



3



4



5



6

## Spiced Java



1



2



3



4



5



6



# WEIGHTS & MEASUREMENTS

## CHASSIS

### PACE ARROW

### PACE ARROW LXE

MODEL	33D	35E	35M	36U	38B	38F	38K
Wheelbase (inches)	208"	242"	242"	252"	252"	263"	252"
GWVR (lbs) <sup>1</sup>	26,000	28,000	28,000	29,500	32,400	32,400	32,400
Front GAWR (lbs) <sup>2</sup>	10,500	10,500	10,500	10,500	12,400	12,400	12,400
Rear GAWR (lbs) <sup>2</sup>	17,500	17,500	17,500	19,000	20,000	20,000	20,000
GCWR (lbs) <sup>3</sup>	30,000	33,000	33,000	33,000	33,000	33,000	33,000
Hitch Rating Weight (lbs) <sup>†</sup>	10,000	10,000	10,000	10,000	10,000	10,000	10,000
Tongue Weight (lbs) <sup>†</sup>	1,000	1,000	1,000	1,000	1,000	1,000	1,000
Fuel Capacity (gal)	90	90	90	90	100	100	100

#### POWER BRIDGE® CHASSIS 300HP - PACE ARROW 33D

Model: Freightliner® XCS Series  
 Engine: Cummins ISB 6.7L  
 Transmission: Allison®, 2,100 MH 6-Speed w/Electronic Shifter  
 Alternator: Delcom Remy 160 Amp  
 Torque: 660 lb.-ft. @ 1,600 RPM  
 Horsepower: 300HP

#### 340HP - PACE ARROW 35M, 35E, 36U PACE ARROW LXE 38B, 38F, 38K

Model: Freightliner® XCM Series  
 Engine: Cummins ISB 6.7L  
 Transmission: Allison® 2,500 MH 6-Speed w/Electronic Shifter  
 Alternator: Delcom Remy 160 Amp  
 Torque: 700 lb.-ft. @ 1,600 RPM (35M, 35E, 36U 38B, 38F, 38K)  
 Horsepower: 340HP

## DIMENSIONS & CAPACITIES PACE ARROW

## PACE ARROW LXE

MODEL	33D	35E	35M	36U	38B	38F	38K
Overall Length (inches) <sup>4</sup>	33' 11"	36' 9"	36' 9"	37' 7"	38' 7.5"	40' 1"	38' 7.5"
Overall Height (suspension inflated)	11' 10"	11' 10"	11' 10"	11' 10"	12' 10"	12' 10"	12' 10"
Overall Width (maximum) <sup>5, 6</sup>	102"	102"	102"	102"	102"	102"	102"
Interior Height (maximum)	84"	84"	84"	84"	84"	84"	84"
Interior Width (maximum)	96"	96"	96"	96"	96"	96"	96"
Patio Awning Width	17'	17'	19' 6"	17'	19' 6"	18"	10' 8"
Interior Storage (cu. ft.)	140	160	170	164	164	164	151
Exterior Storage (cu. ft.)	133	161	161	164	224	224	224
Fresh Water Holding Tank (gal)	77	77	77	77	100	100	100
Grey Water Holding Tank (gal)	60	60	60	60	75	75	75
Black Water Holding Tank (gal)	32	32	32	32	50	50	50
Appliance Propane Tank (gal) (WC) <sup>7</sup>	28.2	28.2	28.2	28.2	38.7	38.7	38.7
Water Heater Tank (gal)	6	6	6	6	10	10	10



Images shown on this page are from the Pace Arrow 35M.

## DISCLAIMERS

1. GVWR (Gross Vehicle Weight Rating) is the maximum permissible weight of this fully loaded motor home. The GVWR is equal to or greater than the sum of the (UVW) unloaded vehicle weight plus the (OCCC) occupant cargo-carrying capacity.
  2. GAWR (Gross Axle Weight Rating) is the maximum permissible loaded weight a specific axle is designed to carry.
  3. GCWR (Gross Combined Weight Rating) is the value specified by the motor home manufacturer as the maximum allowable loaded weight of this motor home with its towed vehicle. Towing and braking capacities may be different. Refer to Fleetwood and chassis manufacturer's manuals for complete information.
  4. Length measured from front bumper to rear bumper (excludes accessories).
  5. Excludes safety equipment and awnings.
  6. Motor homes feature a body width over 96" which will restrict your access to certain roads. Before purchasing, you should research any state and/or province road laws which may affect your usage.
  7. Tank manufacturer's listed water capacity (WC). Actual propane capacity is 80% of water listing as required by the safety code.
- † The chassis manufacturer recommends the installation of a supplemental brake control system to activate the brakes on the vehicle or trailer you are towing. Hitch receiver ratings expressed are maximum for the hitch receiver installed and may require the purchase of additional equipment that is dependent on the weight of the towed load. Consult with hitch receiver manufacturer for further information.
- \* UVW and OCCC are found on the label containing the federal certification tag in each RV.

\*\* All 2017 REV Recreation Group motorhomes include a limited one year/15,000-mile coach warranty and three-year/45,000-mile structural warranty, whichever occurs first, and is fully transferable for the first 12 months.

## FLEETWOOD MOTORHOME ASSOCIATION

As a Fleetwood RV owner, you're invited to become a member of the Fleetwood Motorhome Association (FMA). Becoming a member is the perfect way to meet other Fleetwood owners who love to travel across America and share in the RV lifestyle. Visit the FMA website at [www.fma4fun.org](http://www.fma4fun.org) to learn more and join the fun.

## CONTACT US

To locate a dealer near you, visit our website at [www.fleetwoodrv.com](http://www.fleetwoodrv.com) or call 1-800-322-8216. We can also be contacted at Fleetwood RV Customer Relations, P.O. Box 1007, Decatur, IN 46733.

IMPORTANT—PLEASE READ: Product information, photography and illustrations included in this publication were as accurate as possible at the time of printing. For further product information and changes, please visit our website at [www.fleetwoodrv.com](http://www.fleetwoodrv.com) or contact your local Fleetwood RV dealer. Prices, materials, design and specifications are subject to change without notice. All weights, fuel, liquid capacities and dimensions are approximate. Fleetwood RV has designed its recreational vehicles to provide a variety of uses for its customers. Each vehicle features optimal seating, sleeping, storage and fluid capacities. The user is responsible for selecting the proper combination of loads (i.e., occupants, equipment, fluids, cargo, etc.) to ensure that the vehicle's capacities are not exceeded.



*America's favorite motorhomes.*

**LA MESA RV**  
EXPERIENCE LIFE

[www.lamesarv.com](http://www.lamesarv.com)  
**800-496-8778**