

GRAND TOUR

**WINNEBAGO**







On the Cover: 45RL Merlot Traditional Full-Body Paint

45RL Black Tie with Glazed Java Cabinetry

## Dream Big

If you can dream it, you can find it in the Grand Tour.® Outside, you'll love the new front and rear caps that complement premium full-body paint. Inside, bask in the beauty of quartz countertops and a Corian® shower surround. Kick off your shoes and soak up the warmth of the available heated floors. Or grab the wheel and feel the power of the

Maxum Chassis® as you sink into the Villa luxury cab seats covered in soft Ultraleather.™ Two floorplans provide you choices in lounge and galley layouts that are expertly crafted with the finest residential amenities and detailed finishes available in a motorhome. Dreams do come true in Winnebago's® flagship diesel coach: the Grand Tour.



2016 MotorHome  
READERS' CHOICE  
WINNER  
Class A





45RL Black Tie with Glazed Java Cabinetry

The Grand Tour offers two magnificent living spaces from which to choose, featuring an extendable sectional sofa in the 42QL and a sofa/sleeper with an ottoman in the 45RL. The available sofa/dinette Super Lounge provides a stunning alternative in the 45RL offering a continuous transition from the sofa to dinette with a matching look and feel. The entertainment center has your digital cravings covered with a massive 4K UHD TV and multiple satellite and antenna options to pull in the channels you desire. The Blu-ray™ home theater system soundbar can be upgraded to a Premium Sound System in the lounge and bedroom. Turn up the heat with a standard fireplace and optional heated floors throughout the coach. Automation is everywhere with features such as powered MCD solar/blackout roller shades and a Dirt Devil® central vacuum system making everyday tasks that much more pleasant.



45RL MCD Solar/Blackout Roller Shades



45RL Cab Seats Reclined

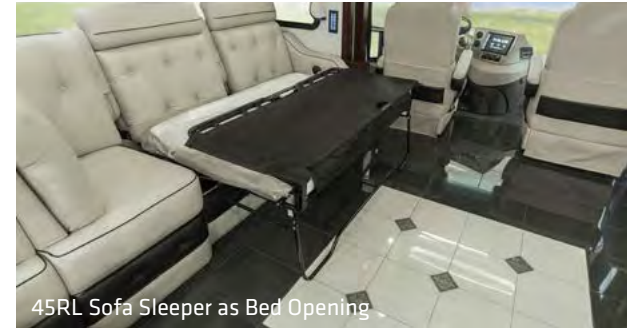




45RL Available Super Lounge Dinette



45RL Available Super Lounge Sofa



45RL Sofa Sleeper as Bed Opening



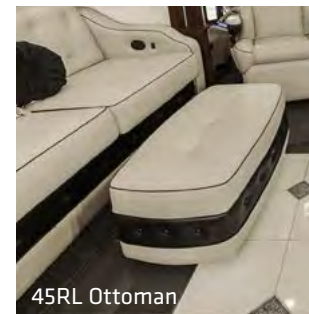
45RL Sofa Sleeper as Bed



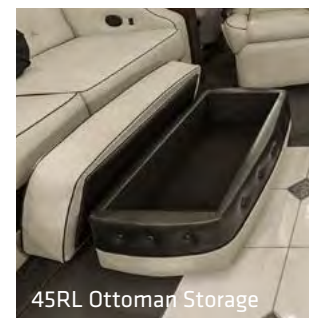
45RL Available Super Lounge Dinette Storage



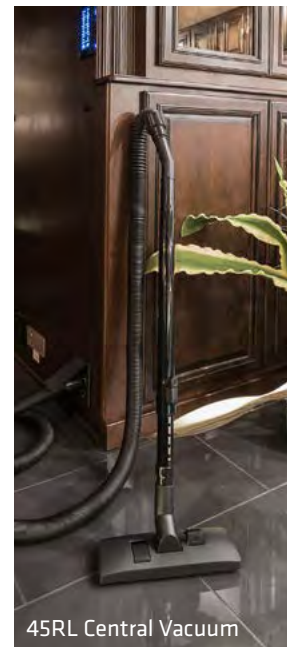
45RL Electric Fireplace and 4K UHD TV



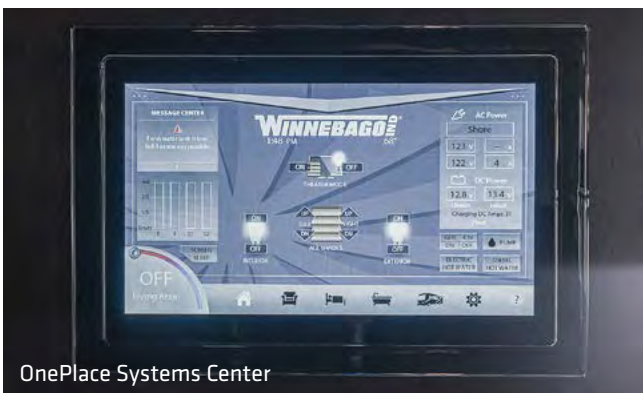
45RL Ottoman



45RL Ottoman Storage



45RL Central Vacuum



OnePlace Systems Center





45RL Galley

Designed to inspire your inner chef, the galley has what you need, where you need it, in a presentation befitting the Grand Tour name. The two-tiered quartz countertop provides next-level functionality and an elegant appearance with a complementary backsplash and bamboo cutting board/sink covers. Stainless steel gives the microwave/convection oven a cutting edge look to match its impressive ability to cook and brown at a quicker speed than a conventional oven. An induction range top and residential French door refrigerator/freezer with water and ice dispenser round out your envy-inducing galley.



45RL Full-Extension Drawers



45RL 2-Burner Induction Range



45RL Residential French Door Refrigerator/Freezer



45RL Dishwasher





45RL Stainless Steel Sink



45RL Bamboo Cutting Boards/Sink Covers



45RL Spice Rack



45RL Power Port



45RL Galley Storage Rack



45RL Hutch Storage





45RL Bedroom



45RL Wardrobe

Welcome to the grand master suite. It has everything you'd expect in a flagship diesel coach, such as a powered king bed with an Ideal Rest® Natural Reserve digital comfort control mattress, a ceiling fan, and a roomy interior with full-size wardrobes. All this, and there is still room for surprises such as twin lavatory sinks and a Magic Mirror HDTV that transforms into a mirrored wall in the 45RL. Both models offer the BIG Shower with a Corian® surround and a clear glass door that is the perfect way to start your day.



45RL Magic Mirror HDTV as Mirror



45RL Magic Mirror HDTV as TV





45RL Master Bathroom



45RL Washer/Dryer



45RL BIG Shower



45RL Mid-Coach Bath



45RL Master Vanity



45RL Mid-Coach Vanity



45RL Bathroom Vent





Dash

Whether you're climbing hills, towing a vehicle, or both, the Cummins® ISL 8.9L, 450-hp turbo-charged diesel engine is up to the challenge. And with fully adjustable, powered Villa luxury cab seats, you will be, too. For added safety, rearview cameras, sideview cameras, and the Mobileye® Collision Avoidance System all come standard. Plan your next trip on the 10.4" touch screen Infotainment Center with Rand McNally RV GPS for safe and easy routing and turn-by-turn voice navigation. The system features two touch screens and controls for the radio, available SiriusXM® radio, and any Bluetooth® connected devices. Crank up the volume on the available Infinity 11-speaker Premium Cab Sound System.



Cup Holder



Mobileye Collision Avoidance System





People can't stop talking about the gorgeous exterior of the Grand Tour. It comes in four traditional and four contemporary full-body paint schemes to make your presence known. Thanks to the lowered-rail construction of the Maxum Chassis,<sup>®</sup> you'll have room for large items like golf clubs and bicycles, and an easy way to access them with a smooth-gliding slideout storage tray. The pull-out Tailgate Package comes standard with an induction range, refrigerator/freezer, water faucet, and more to bring the party outdoors. Add the exterior entertainment center and enjoy the HDTV and soundbar system with a subwoofer.



45RL Powered Patio Awning with LED Lighting



Exterior Mirror with Defrost and Sideview Camera



45RL Stylized Aluminum Wheel



LED Awning Lights





Exterior Storage



45RL Automatic Entrance Steps



45RL Exterior Wash Station



Exterior Storage



Available Exterior Entertainment Center



45RL Exterior Service Center



45RL Pull-Out Tailgate Package



Available Exterior Entertainment Center Soundbar



**Fiberglass Roof** The crowned, one-piece fiberglass roof is backed by a 10-year limited parts-and-labor roof skin warranty.

**Thermo-Panel® Sidewalls** By layering fiberglass and high-density block foam insulation with welded aluminum support structures, we create some of the industry's strongest, most durable and lightweight sidewalls.

**E-Coating** An electrodeposition coating helps protect critical steel components.

**Embedded Steel** Metal substructures embedded into the sidewall provide solid attachment points to keep cabinets and appliances mounted securely in place.

**Solid Framework** Structural extruded aluminum creates an extremely strong and solid structural framework.

**Laser-Cut Tubing** Precision laser cutters create precise joints in structural steel that are stronger and require less welding.



**Interlocking Joints** Specially engineered interlocking joints connect the floor, sidewalls and roof where competitors often rely on simple screws to bear the weight.



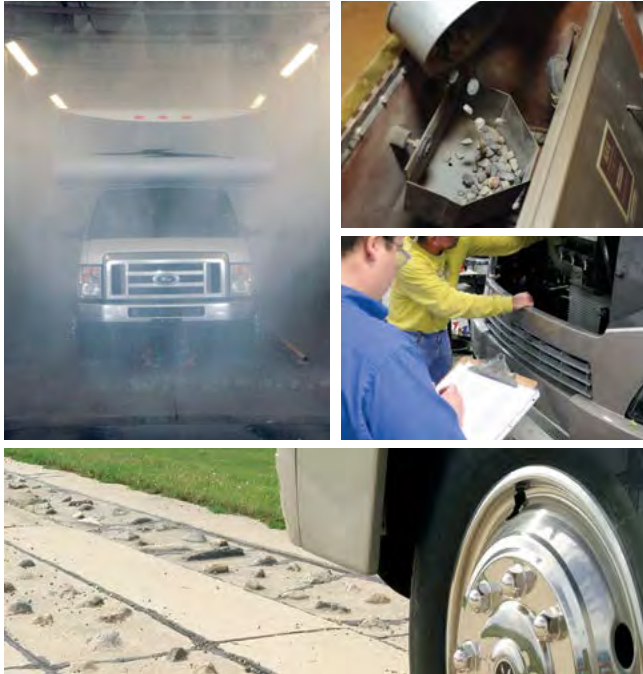
**SUPER  
STRUCTURE**

BUILT TO LAST

Every coach—from our smallest Class C to our largest diesel-pusher model—is built to Winnebago's® legendary SuperStructure® construction design. It's a process developed and refined over more than 50 years of building some of the strongest, most durable coaches in the industry.



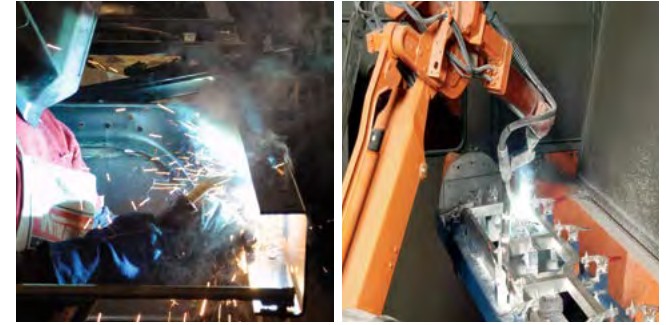
**TESTING** Before rolling out of our factories, every coach undergoes an extensive 113-point inspection. Each coach also passes a high-pressure water test that simulates rain at a rate of 50-inches per hour to check for leaks. During the design process, our computer simulations, physical testing center, and rigorous test track ensure each model is built to last.



**DETAILS** At Winnebago, we treat the features you can't see with the same care as the ones you can. Look in the access panels of some of our competitors' coaches and you'll see loose insulation and wires haphazardly strewn about. Winnebago maintains a clean fit and finish throughout so your coach will last for the long haul.



**BUILT IN-HOUSE** We process and finish key aluminum parts. We rotocast our own plastic components. In fact, we manufacture most of our own parts so they are designed to fit the space, rather than fitting the space to an awkward off-the-shelf component size.



**SUPER  
STRUCTURE**  
BUILT TO LAST

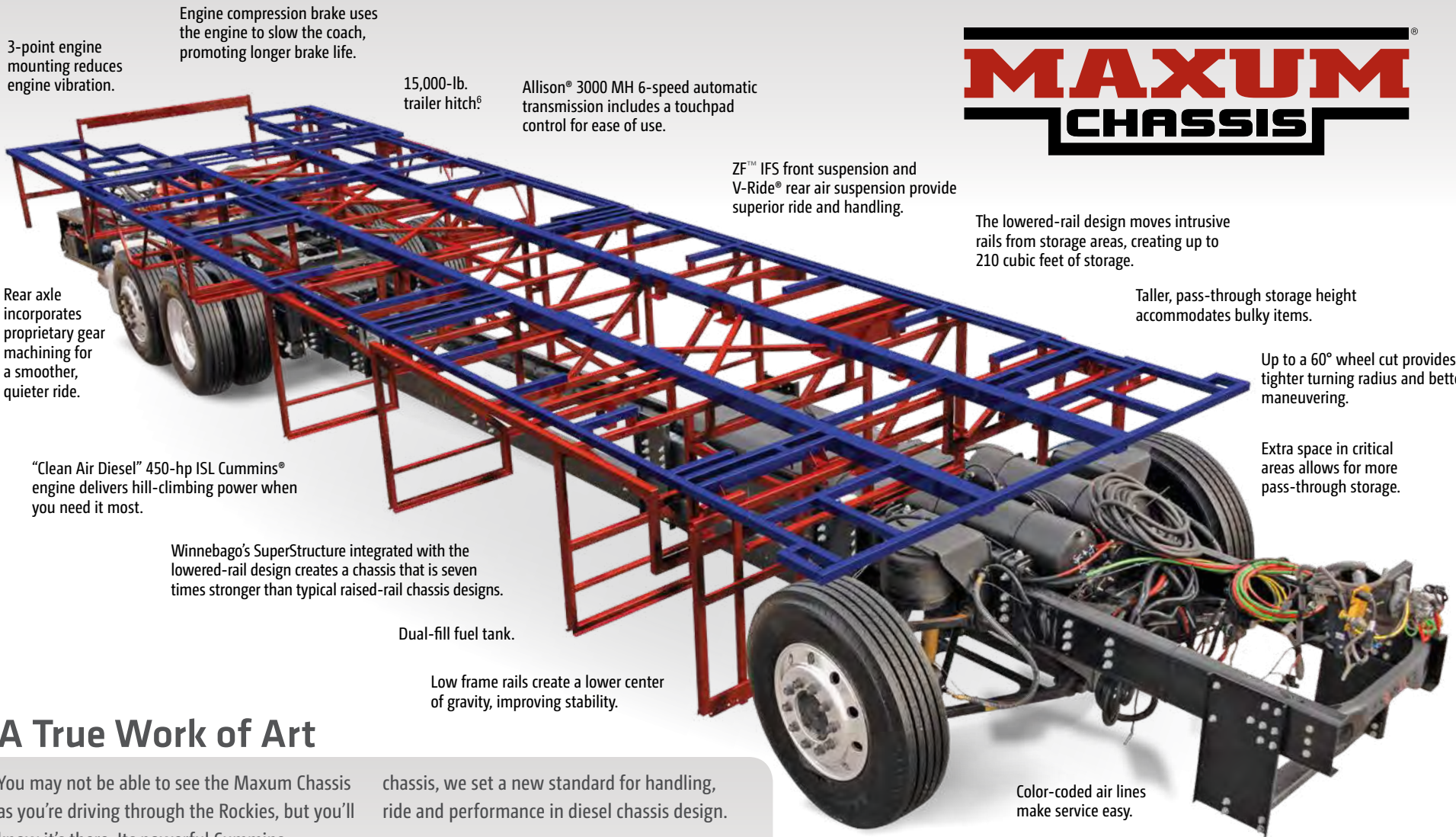
**W** Visit [BetterBuiltRVs.com](http://BetterBuiltRVs.com) to gain real insight into what goes into a Winnebago motorhome.

**TAKE A TOUR** We're proud of our processes, state-of-the-art facilities, and the people who make Winnebago number one. We invite you to visit our complex in Forest City, Iowa, for a firsthand look at the dedication and technology behind every motorhome we build.

Call (641) 585-6936 or (800) 643-4892 or visit us online at [WinnebagoIInd.com/company/visit](http://WinnebagoIInd.com/company/visit) for more information.







**MAXUM**  
**CHASSIS**

3-point engine mounting reduces engine vibration.

Engine compression brake uses the engine to slow the coach, promoting longer brake life.

15,000-lb. trailer hitch<sup>o</sup>

Allison<sup>®</sup> 3000 MH 6-speed automatic transmission includes a touchpad control for ease of use.

ZF<sup>™</sup> IFS front suspension and V-Ride<sup>®</sup> rear air suspension provide superior ride and handling.

The lowered-rail design moves intrusive rails from storage areas, creating up to 210 cubic feet of storage.

Rear axle incorporates proprietary gear machining for a smoother, quieter ride.

Taller, pass-through storage height accommodates bulky items.

"Clean Air Diesel" 450-hp ISL Cummins<sup>®</sup> engine delivers hill-climbing power when you need it most.

Up to a 60° wheel cut provides a tighter turning radius and better maneuvering.

Winnebago's SuperStructure integrated with the lowered-rail design creates a chassis that is seven times stronger than typical raised-rail chassis designs.

Extra space in critical areas allows for more pass-through storage.

Dual-fill fuel tank.

Low frame rails create a lower center of gravity, improving stability.

Color-coded air lines make service easy.

**A True Work of Art**

You may not be able to see the Maxum Chassis as you're driving through the Rockies, but you'll know it's there. Its powerful Cummins turbo-charged diesel engine and Allison<sup>®</sup> transmission go to work so you don't have to sweat the peaks and valleys ahead.

chassis, we set a new standard for handling, ride and performance in diesel chassis design.

But performance doesn't mean sacrificing storage. The innovative lowered-rail design of the Maxum Chassis opens up a cavernous basement storage compartment, offering up to 210 cubic feet of storage.

Through a strong partnership with Freightliner<sup>®</sup>, the undisputed leader in diesel motorhome

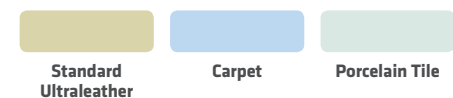
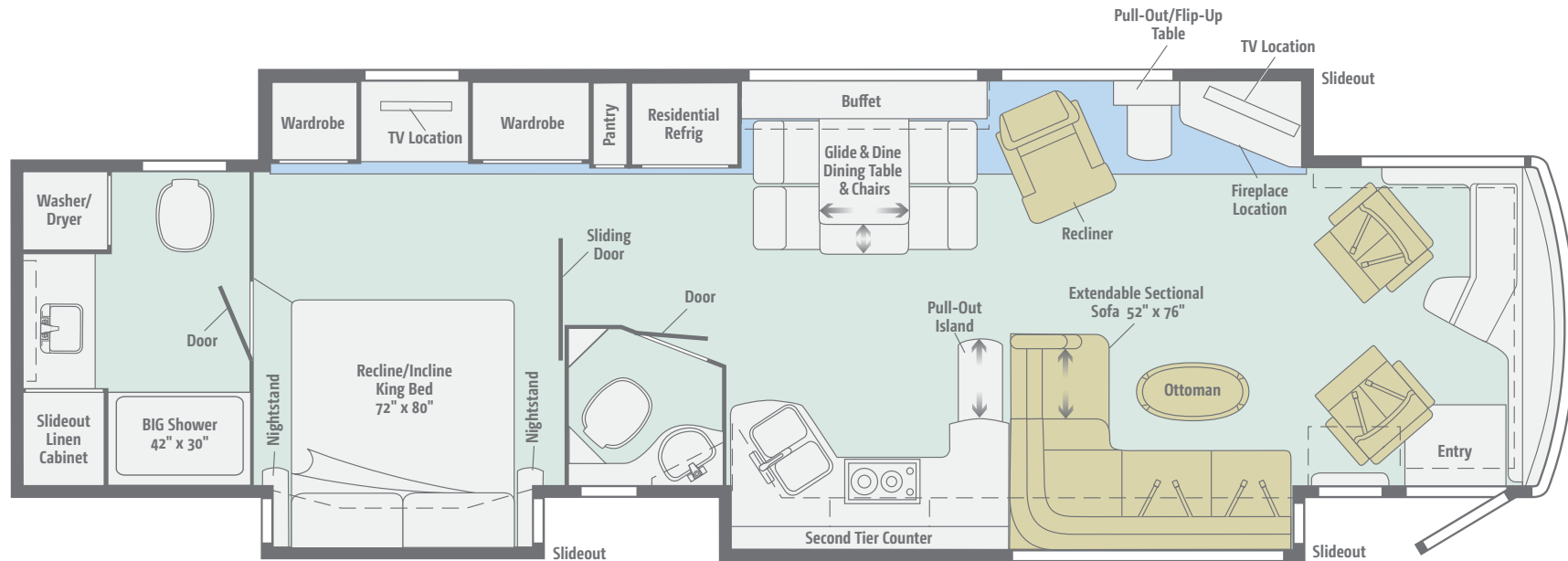
Michelin<sup>®</sup> tires and polished aluminum wheels look sharp.

4-wheel ABS anti-lock air brakes provide fast stopping power.



## 42QL

The 42QL greets you with the grand spectacle of a living room with an extendable sectional sofa, recliner, and massive entertainment center.

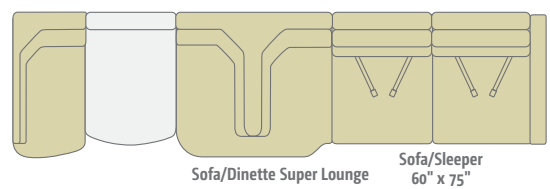
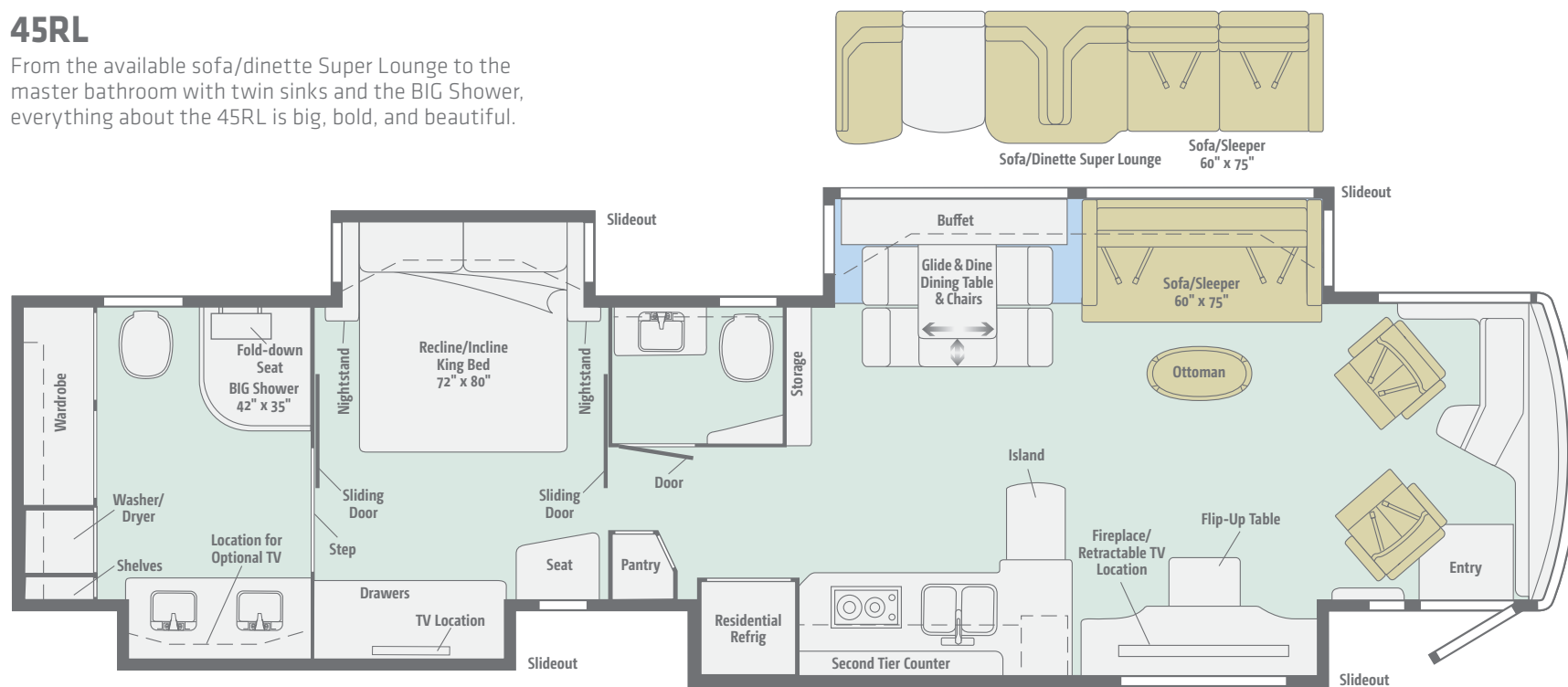


Dimensions shown are for sleeping space only and may vary due to styling differences. Dashed lines denote overhead storage areas. Floorplans and specifications are also available online at [WinnebagoInd.com](http://WinnebagoInd.com).



## 45RL

From the available sofa/dinette Super Lounge to the master bathroom with twin sinks and the BIG Shower, everything about the 45RL is big, bold, and beautiful.



|                                  |               |                       |
|----------------------------------|---------------|-----------------------|
|                                  |               |                       |
| <b>Standard<br/>Ultraleather</b> | <b>Carpet</b> | <b>Porcelain Tile</b> |

Dimensions shown are for sleeping space only and may vary due to styling differences. Dashed lines denote overhead storage areas. Floorplans and specifications are also available online at [WinnebagoInd.com](http://WinnebagoInd.com).

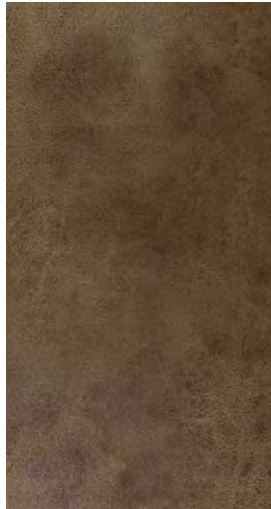


Choose from four fabric collections and three wood finishes.

## Bella Rosa



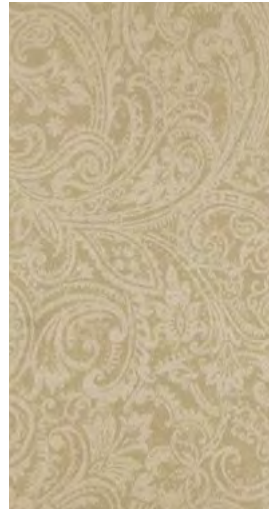
Ultraleather



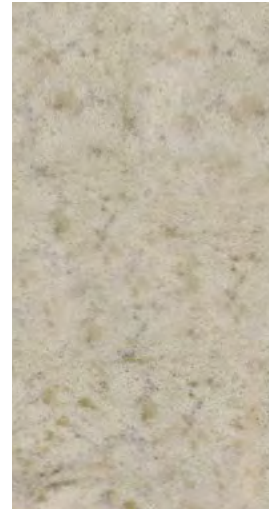
Accent Ultraleather



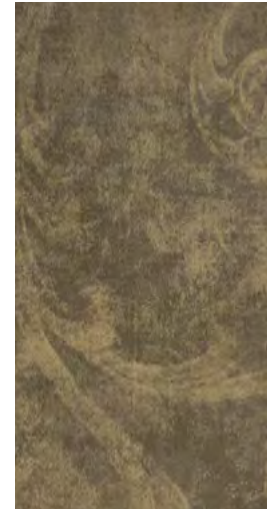
Feature Fabric



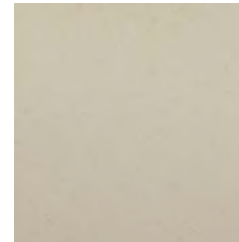
Bedspread



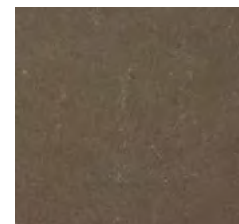
Quartz Countertop



Wall Board



Porcelain Tile



Porcelain Tile Accent



Coffee-Glazed  
Honey Cherry



Coffee-Glazed  
Vienna Maple



Glazed Java  
*(NA after 2/17/17)*



Choose from four fabric collections and three wood finishes.

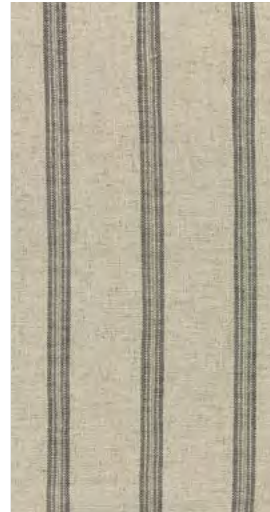
## Vintage Linen



Ultraleather



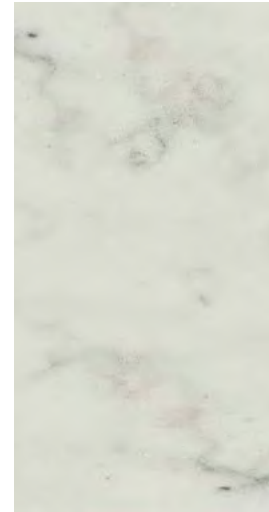
Accent Ultraleather



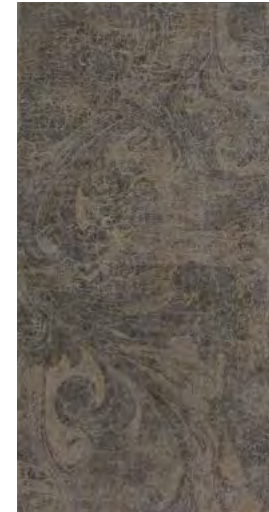
Feature Fabric



Bedspread



Quartz Countertop



Wall Board



Porcelain Tile



Porcelain Tile Accent



Coffee-Glazed  
Honey Cherry



Coffee-Glazed  
Vienna Maple



Glazed Java  
(NA after 2/17/17)

Winnebago® reserves the right to change décor materials and specifications without notice or obligation.

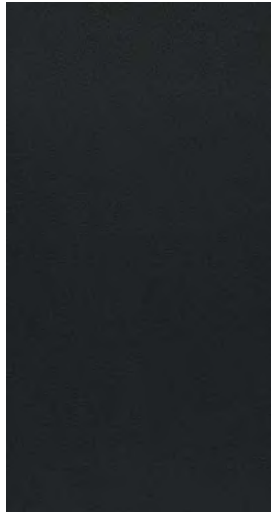


Choose from four fabric collections and three wood finishes.

## Black Tie



Ultraleather



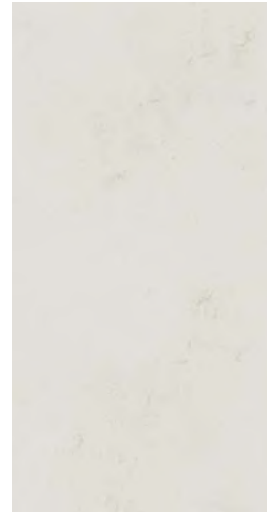
Accent Ultraleather



Feature Fabric



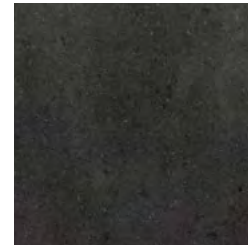
Bedspread



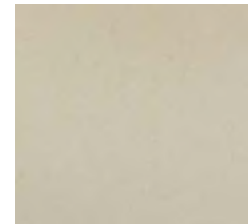
Quartz Countertop



Wall Board



Porcelain Tile



Porcelain Tile Accent



Coffee-Glazed  
Honey Cherry



Coffee-Glazed  
Vienna Maple



Glazed Java  
(NA after 2/17/17)

*Winnebago® reserves the right to change décor materials and specifications without notice or obligation.*



Choose from four fabric collections and three wood finishes.

## Cambridge



Ultraleather



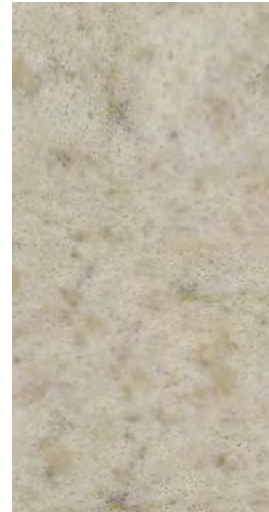
Accent Ultraleather



Feature Fabric



Bedspread



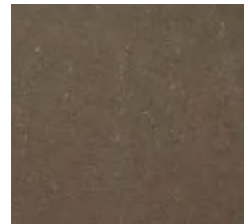
Quartz Countertop



Wall Board



Porcelain Tile



Porcelain Tile Accent



Coffee-Glazed  
Honey Cherry



Coffee-Glazed  
Vienna Maple



Glazed Java  
(NA after 2/17/17)

*Winnebago® reserves the right to change décor materials and specifications without notice or obligation.*



# GRAND TOUR Paint



Choose from four traditional or four contemporary full-body paint options.



**Beachwood**  
TRADITIONAL FULL-BODY PAINT



**Merlot**  
TRADITIONAL FULL-BODY PAINT



**Platinum**  
TRADITIONAL FULL-BODY PAINT



**Spiral Gray**  
TRADITIONAL FULL-BODY PAINT



# GRAND TOUR Paint



Choose from four traditional or four contemporary full-body paint options.



**Bordeaux**  
CONTEMPORARY FULL-BODY PAINT



**Dark Spiral Gray**  
CONTEMPORARY FULL-BODY PAINT



**Midnight**  
CONTEMPORARY FULL-BODY PAINT



**Sandstone**  
CONTEMPORARY FULL-BODY PAINT



## WEIGHTS & MEASURES

|  | <b>42QL</b> | <b>45RL</b> |
|--|-------------|-------------|
| <b>Length</b>  | 43'         | 44'         |
| <b>Exterior Height<sup>1</sup></b>                           | 12'10"      | 12'11"      |
| <b>Exterior Width<sup>2</sup></b>                            | 8'5.5"      | 8'5.5"      |
| <b>Exterior Storage<sup>3</sup> (cu. ft.)</b>                | 196         | 210         |
| <b>Awning Length</b>   | 16'/19'     | 17'/19'     |
| <b>Interior Height</b>                                       | 7'          | 7'          |
| <b>Interior Width</b>  | 8'0.5"      | 8'0.5"      |
| <b>Freshwater Tank Capacity<sup>4</sup> (gal.)</b>           | 85          | 85          |
| <b>Water Heater Capacity (gal.)</b>                          | Continuous  | Continuous  |
| <b>Holding Tank Capacity - Black/Gray<sup>4</sup> (gal.)</b> | 51/71       | 51/95       |
| <b>LP Capacity<sup>5</sup> (gal.)</b>                        | 5.6         | 5.6         |
| <b>Fuel Capacity (gal.)</b>                                  | 150         | 150         |
| <b>GCWR<sup>6</sup> (lbs.)</b>                               | 60,660      | 60,660      |
| <b>GVWR (lbs.)</b>   | 45,660      | 45,660      |
| <b>GAWR - Front (lbs.)</b>                                   | 15,660      | 15,660      |
| <b>GAWR - Rear (lbs.)</b>                                    | 30,000      | 30,000      |
| <b>Wheelbase</b>   | 279" + tag  | 291" + tag  |
| <b>Seating Capacity</b>                                      | 4           | 4           |

## Maxum Chassis<sup>®</sup>

**Cummins<sup>®</sup> ISL 8.9L 450-hp turbo-charged diesel engine** w/3-stage compression brake

**UltraSteer** passive tag axle

**Adjustable brake and accelerator pedals**

**Allison<sup>®</sup> 3000 MH 6-speed electronic transmission**

**Information display center**

**ZF<sup>™</sup> Independent Front Air Suspension, V-Ride<sup>®</sup> Rear Air Suspension**

**240-amp. alternator**

**Air brakes** w/ABS

**Quick-connect air accessory**

**HWH automatic hydraulic leveling jacks**

**Towing package** w/7-pin trailer wiring and I.P. wiring

**Trailer hitch<sup>6</sup>** 15,000-lb. drawbar/1,500-lb. maximum vertical tongue weight

**Stylized aluminum wheels**

**Side radiator**

## OPTIONAL EQUIPMENT

**Automatic air leveling system**

## Cab Conveniences

**Villa luxury cab seats** driver and queen passenger seat w/6-way power, power footrests, heat and massage, remote swivel, power lumbar support, manual recline, adjustable armrests

### 3-point seat belts

**Infotainment Center with Rand McNally RV GPS** 10.4" touch screen color monitor w/split screen function, 2nd monitor, Rand McNally RV GPS safe & easy routing, amenities & tools, trips & content, turn-by-turn voice guidance, AM/FM radio, steering wheel and handheld remote, SiriusXM<sup>®</sup> (subscription not included), compass, outside temperature, Bluetooth<sup>®</sup>, color rearview camera, sideview camera display, USB, house mode feature

### Video camera system

**Tilt/telescoping steering wheel**

### Cruise control

**Powered entrance and storage door locks** w/remote keyless entry

**Powered adjustable mirrors** w/defrost, sideview color cameras and turn signal

**12-volt powerpoints and USB chargers**

**Powered stepwell cover**

**2-speed built-in defroster fans**

**MCD powered solar/blackout roller shades** (windshield)

**Chassis/house battery radio power switch**

**Sirius satellite radio**

**Mobileye<sup>®</sup> Collision Avoidance**

## OPTIONAL EQUIPMENT

**Infinity Premium Cab Speakers** (system includes 11 speakers)

## Interior

**Electric fireplace** adjustable thermostat and flame, handheld remote, electric timer w/automatic shut-off

**50" 4K UHD TV** (42QL)

**60" 4K UHD TV** (45RL)

**Blu-ray<sup>™</sup> Home Theater** w/soundbar and subwoofer

**Dirt Devil<sup>®</sup> central vacuum system** w/VacPan<sup>®</sup>

**Security safe**

**HDMI 4x4 Matrix central video selection system**

**Satellite system ready**

**Skylight** w/powered shade

**Contour<sup>™</sup> windows tinted, dual-glazed, thermo-insulated**

**Soft vinyl ceiling**

**Powered ventilator fan** w/wall switch (galley)

**MCD manual solar roller shades** (driver/passenger, lounge, dinette, bedroom windows)

**MCD powered blackout roller shades** (driver/passenger, lounge, dinette, bedroom windows)

**LED ceiling lights** w/dimming feature

**Accent lights** above front overhead cabinets and ceiling trim panels

**Jack<sup>®</sup> digital TV amplified antenna system**

**Stackable washer/dryer**

**Multi-plex wall switches**

**OnePlace<sup>®</sup> system center**

**USB chargers** (cab, dining)

**110V receptacle** w/USB port (bedroom)

## OPTIONAL EQUIPMENT

**Winegard<sup>®</sup> Trav'ler<sup>®</sup> automatic multi-satellite antenna** for Dish Network and DIRECTV

**Winegard Rayzar<sup>®</sup> automatic TV antenna system**

**Yamaha<sup>®</sup> Premium Sound System** (lounge and bedroom)

**Digital amplified TV antenna**

## Galley

**Quartz countertops** w/decorative backsplash and bamboo sink covers

**Stainless steel microwave/convection oven** w/exterior vented range fan and touch control

**Drawer-style dishwasher**

**2-burner induction range top** w/rapid cooling ceramic glass top and electronic controls

**Residential French door refrigerator** w/freezer drawer, water and ice dispenser

**Cold water filtration system**

**Double bowl stainless steel sink**

## Bath

**Quartz countertop** w/decorative backsplash

**Delta<sup>®</sup> handheld, flexible showerhead**

**Skylight** (45RL)

**Porcelain toilet** w/power flush

**Area rug** (master bath)

**Fold-down shower seat** (45RL)

**Teak removable shower mat**

**Corian shower surround** w/decorative inserts

**MCD manual solar/blackout roller shades**

**Powered ventilator fan**



Powered roof vent  
Towel bar(s)  
Towel ring(s)  
Medicine cabinet  
Robe hook(s) (42QL)  
Tissue holder  
Soap dispenser

## OPTIONAL EQUIPMENT

Magic Mirror 29" HDTV (45RL)

## Bedroom

28" HDTV (42QL)

43" Magic Mirror HDTV (45RL)

Ceiling fan

Powered king bed w/Ideal Rest® Natural Reserve digital comfort control mattress and remote controls

Bedsread, pillows, and shams

Headboard

## Exterior

Exterior entertainment center 40" HDTV w/extendable/pivot mounting bracket, home theater soundbar system, and subwoofer

Auxiliary docking lamps

Driver-side service bay lights

Slideout storage compartment tray (extends out either side of the coach)

2 powered multi-stage, armless acrylic patio awnings w/LED lights and motion sensor

Powered acrylic entrance awning w/LED lights

Acrylic window awnings

KeyOne™ lock system

Lighted assist handle w/keyless entry keypad

Lighted storage compartments

Storage containers w/lids

7' folding step ladder

Stepwell lights w/interior switch

Automatic entrance steps

Lower front protective mask  
Premier clearcoat automotive finish  
Rear mud flaps  
Full-width rear mudguard

**Pull-Out Tailgate Package** single burner induction range top, steel counter, refrigerator/freezer, bottle opener, garbage bag holder, paper towel holder, cold water access port, flexible water spout w/shut off, 15' coil water hose, LED light fixture, 110-volt/AC receptacle, large storage area

## OPTIONAL EQUIPMENT

Polished stainless steel on lower valance doors and panels

Exterior entertainment center 55" HDTV w/extendable/pivot mounting bracket, home theater soundbar system, and subwoofer

## Heating & Cooling System

**TrueAir® Maximum Comfort A/C** 3-13,500 BTU roof air conditioners w/2 heat pumps and 3 condensation pumps

**Aqua-Hot® 450 hydronic dual-zone heating system** w/continuous hot water and engine pre-heat

Triple-zone thermostat

## OPTIONAL EQUIPMENT

Heated floor

## Electrical System

Service Center 120-volt AC power, cable input, portable satellite dish hook-up, QuickPort® service connection hatch, multi-plex panel, solar control module

PowerLine® Energy Management System

OnePlace® 10" touch screen systems control center

Auxiliary start circuit

50-amp. power cord w/reel

100-watt solar panel battery charger

2,800-watt AC/DC Pure Sine inverter/charger w/remote panel

10,000-watt Cummins Onan® Quiet Diesel™ generator

AC/DC electrical distribution system

6 maintenance-free AGM deep-cycle Marine/RV sealed coach batteries

Battery disconnect system (coach and chassis)

Automatic dual-battery charge control

Safe Guard® shoreline/generator automatic changeover switch w/surge protection

Chassis battery charger/maintainer

Automatic generator start system

Hide-a-power pop-up receptacle w/USB chargers and outlets (45RL)

## Plumbing System

Service Center multi-plex monitor panel, pressurized city water hookup w/diverter fill, drainage valves, exterior wash station, glove holder, holding tank flushing system, paper towel holder, 20' sewer hose w/QuickConnect®, QuickPort service connection hatch, soap dispenser

TrueLevel™ holding tank monitoring system

Water supply hose w/reel

Full coach water filtration system

Portable LP tank w/gauge and LPG accessory connection (patio area)

On-demand water pump

Winterization Package water heater bypass valve and siphon tube

Heated holding tank compartments

## Safety

LP, smoke, and carbon monoxide detectors

10 BC fire extinguisher

Ground fault interrupter

Daytime running lamps

Fog lamps

High-mount brake lamps

## Warranty<sup>7</sup>

12-month/15,000-mile basic limited warranty<sup>8</sup>

36-month/36,000-mile limited warranty on structure<sup>8</sup>

10-year limited parts-and-labor warranty on roof skin<sup>8</sup>

### FOOTNOTES

- The height of each model is measured to the top of the tallest standard feature and is based on the curb weight of a typically equipped unit. The actual height of your vehicle may vary by several inches depending on chassis or equipment variations. Please check with your dealer for further information.
- Floorplans feature a wide-body design - over 96" In making your purchase decision, you should be aware that some states restrict access on some or all state roads to 96" in body width. Before making your purchase decision, you should confirm the road usage laws in the states of interest to you.
- The load capacity of your motorhome is designated by weight, not by volume, so you cannot necessarily use all available space when loading your motorhome.
- Capacities are based on measurements prior to tank installation. Slight capacity variations can result due to installation applications.
- Capacities shown are tank manufacturer's listed water capacity (W.C.). Actual filled LP capacity is 80% of listing due to overfilling prevention device on tank.
- Actual towing capacity is dependent on your particular loading and towing circumstances which includes the GVWR, GAWR, and CCWR as well as adequate trailer brakes. Please refer to the Operator's Manual of your vehicle for further towing information.
- See separate chassis warranty.
- See your dealer for complete warranty information.

NA Not Available

Not all items available in combination. See dealer for details.

Winnebago's® continuing program of product improvement makes specifications, equipment, model availability, and prices subject to change without notice. Published content reflects the most current product information at time of printing. Please consult your dealer for individual vehicle features and specifications.



Let us host  
your next

# Adventure



[WGOAdventures.com](http://WGOAdventures.com)



**WINNEBAGO**<sup>TM</sup>  
RV INSURANCE



From RV to personal insurance, Winnebago RV Insurance can provide all the coverage and services you need to feel at home on the road.

**For more information:**  
**(800) 642-4892**

Connect with Winnebago (Click one of the following)



Like us



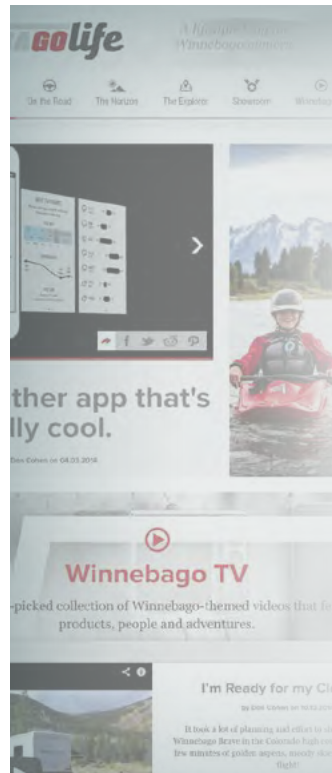
Follow us



Watch us

## WinnebagoInd.com Has All The Answers

Visit [WinnebagoInd.com](http://WinnebagoInd.com) on your computer, smartphone, or tablet for the latest product information and updates.



## Welcome to GoLife!

Visit our lifestyle blog for motorhome news, personal travelogues, and community stories.

**[WinnebagoLife.com](http://WinnebagoLife.com)**

**GoLife**



# **PREFERRED CARE PROGRAM**

We back our motorhomes with best-in-class support both before and after the sale:

- 12-month/15,000-mile basic limited warranty
- 36-month/36,000-mile limited warranty on structure
- 10-year limited parts-and-labor warranty on fiberglass roof
- Complimentary 24-hour roadside assistance program
- TripSaver® Fast Track Parts guarantees that in-stock warranty parts ship directly to your dealer within 24 hours
- National dealer service network



For more information:  
[WGOService.com](http://WGOService.com)



## **WIT CLUB**

### Join the Club, Join the Fun

Here's the perfect way to begin your life on the road as the owner of a new Winnebago – by joining the exclusive WIT Club. Start your adventure with other fun-loving WIT Club members from across the country and get the most out of your new Winnebago motorhome.



#### Members enjoy:

- Caravans and rallies
- Newsletters
- Local and state group activities
- RV travel benefits

See more at  
[WITClub.com](http://WITClub.com)



### Grand National Rally

Each year, thousands of Winnebago owners descend upon Forest City, Iowa. Rally-goers enjoy an unforgettable week reconnecting with friends, taking tours, participating in activities, and more. Join the adventure next July!

# **WINNEBAGO**<sup>IND</sup>

## CONTACT US

### GENERAL INQUIRIES

Corporate Switchboard  
(641) 585-3535

### CURRENT PRODUCT OWNER AND SERVICE-RELATED INQUIRIES

(800) 537-1885  
or [winnebagoind.com](mailto:winnebagoind.com)

### NEW VEHICLE SALES INQUIRIES

[sales@winnebagoind.com](mailto:sales@winnebagoind.com)

### FAX

(641) 585-6966

### POSTAL ADDRESS

Winnebago Industries, Inc.  
P.O. Box 152  
Forest City, IA 50436

### STREET ADDRESS

Winnebago Industries, Inc.  
605 West Crystal Lake Road  
Forest City, IA 50436

# **LA MESA RV**

EXPERIENCE LIFE

[www.lamesarv.com](http://www.lamesarv.com)  
800-496-8778